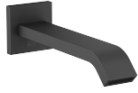


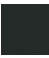





## IMO Bath spout for wall mounting - Matte Black

IMO

13 801 670



- 200mm projection
- rectangular normal flow
- hole diameter 37 mm
- 1/2" connection
- max. flow 25.1 l/min at 3 bar flow pressure
- WRAS 2005002

	Matte Black	13 801 670-33
	Chrome	13 801 670-00
	Brushed Platinum	13 801 670-06
	Dark Chrome	13 801 670-19
	Brushed Light Gold	13 801 670-27
	Brushed Chrome	13 801 670-93

### Required miscellaneous

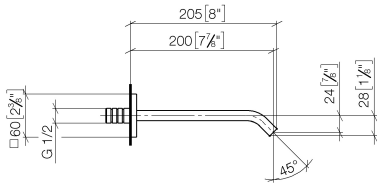
**Concealed adapter -**

35 080 970-90  
0010

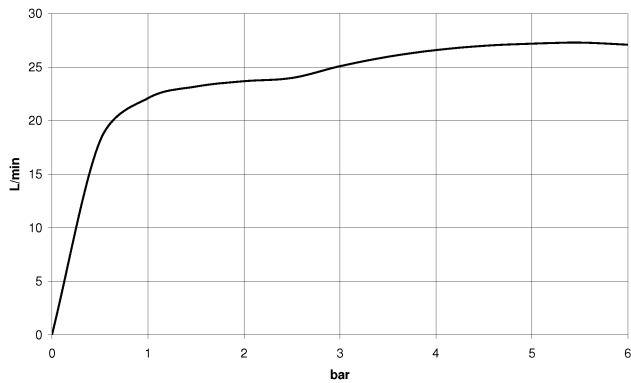


13 801 670

mm [inches]



Flow rate chart



Codes & Standards

ASME A112.18.1

ASME  
A112.18.1/CSA  
B125.1

cUPC



## IMO Bath spout for wall mounting - Matte Black

---

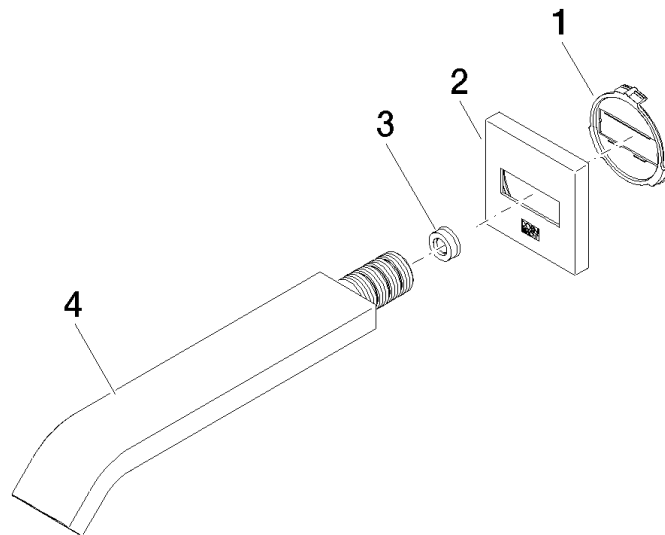
IMO

13 801 670

### Certificates

---

IAPMO\_4976





## IMO Bath spout for wall mounting - Matte Black

IMO

13 801 670

### Spare parts list