

**VAIA Bath spout for wall mounting - Chrome**

VAIA

13 801 809



- 200mm projection
- circular normal flow
- hole diameter 37 mm
- rosette Ø 60 mm
- 1/2" connection
- max. flow 21.5 l/min at 3 bar flow pressure
- WRAS 1801017

|   |                                |               |
|---|--------------------------------|---------------|
|  | Chrome                         | 13 801 809-00 |
|  | Brushed Platinum               | 13 801 809-06 |
|  | Platinum                       | 13 801 809-08 |
|  | Dark Chrome                    | 13 801 809-19 |
|  | Brushed Durabronze (23kt Gold) | 13 801 809-28 |
|  | Brushed Champagne (22kt Gold)  | 13 801 809-46 |
|  | Champagne (22kt Gold)          | 13 801 809-47 |
|  | Brushed Dark Platinum          | 13 801 809-99 |

**Required miscellaneous**

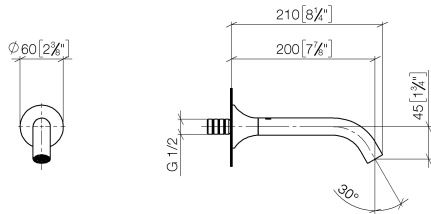
**Concealed adapter -**

35 080 970-90  
0010

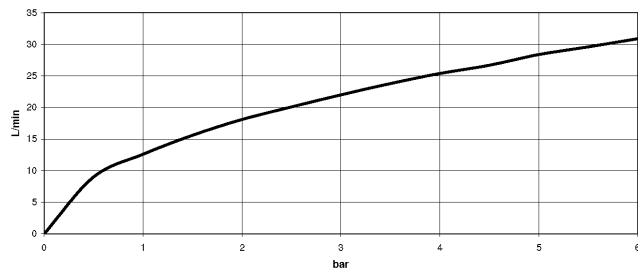


13 801 809

mm [inches]



### Flow rate chart



### Codes & Standards

ASME  
A112.18.1/CSA  
B125.1



## VAIA Bath spout for wall mounting - Chrome

---

VAIA

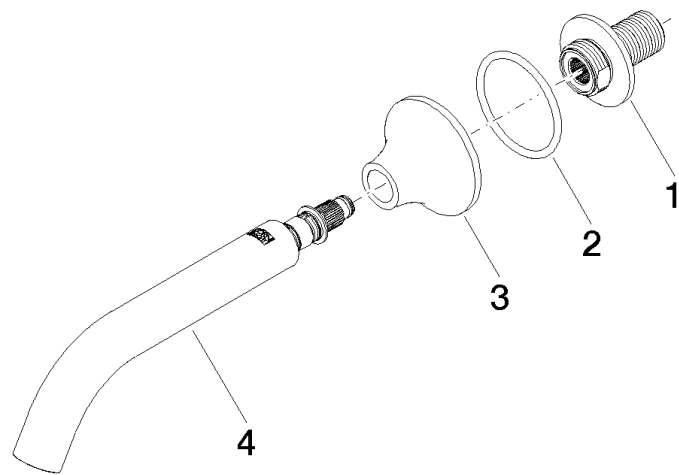
13 801 809

### Certificates

---

WRAS\_2306002.      LGA\_29290.

13 801 809



Spare parts list

| No. | Item Number        | Name    | Quantity used | Delivery time |
|-----|--------------------|---------|---------------|---------------|
| 1   | 09 24 03 269 90    | nipple  | 1             | 2             |
| 2   | 09 14 10 084 90    | seal    | 1             | 2             |
| 3   | 09 27 80 014-00    | rosette | 1             | 10            |
| 4   | 90 28 22 315 00-00 | spout   | 1             | 10            |