

VAIA Bath spout for wall mounting - Dark Chrome

VAIA

13 801 809

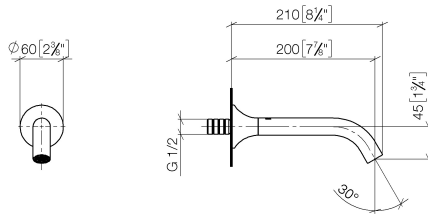


- 200mm projection
- circular normal flow
- hole diameter 37 mm
- rosette Ø 60 mm
- 1/2" connection
- max. flow 21.5 l/min at 3 bar flow pressure
- WRAS 2306002

| | | |
|--|-------------------------------------|---------------|
|  | Dark Chrome | 13 801 809-19 |
|  | Chrome | 13 801 809-00 |
|  | Brushed Platinum | 13 801 809-06 |
|  | Platinum | 13 801 809-08 |
|  | Brushed Durabronze (23kt Gold) | 13 801 809-28 |
|  | Brushed Bronze | 13 801 809-42 |
|  | Brushed Champagne (22kt Gold) | 13 801 809-46 |
|  | Champagne (22kt Gold) | 13 801 809-47 |
|  | Brushed Dark Platinum | 13 801 809-99 |

13 801 809

mm [inches]



Flow rate chart



Codes & Standards

| | | | |
|---------------------------------|-----------|----------|---------------------------|
| ASME A112.18.1/CSA B125.1 | DIN 4109 | ISO 3822 | Scottish Water Byelaws |
| UK Water Supply Regulations | Ü-Zeichen | | |



VAIA Bath spout for wall mounting - Dark Chrome

VAIA

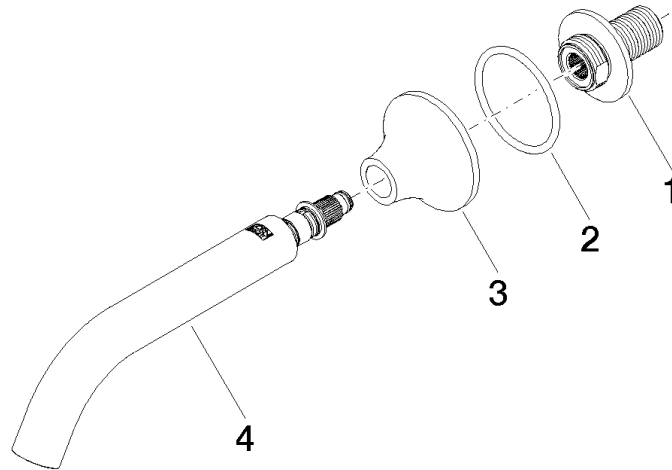
13 801 809

Certificates

WRAS_2306

LGA_29

Parts for other
finishes can be found
here: [Chrome](#)





VAIA Bath spout for wall mounting - Dark Chrome

VAIA

13 801 809

Spare parts list