

VAIA Bath spout for wall mounting - Brushed Bronze

VAIA

13 801 809



- 200mm projection
- circular normal flow
- hole diameter 37 mm
- rosette Ø 60 mm
- 1/2" connection
- max. flow 21.5 l/min at 3 bar flow pressure
- WRAS 2306002

	Brushed Bronze	13 801 809-42
	Chrome	13 801 809-00
	Brushed Platinum	13 801 809-06
	Platinum	13 801 809-08
	Dark Chrome	13 801 809-19
	Brushed Durabronze (23kt Gold)	13 801 809-28
	Brushed Champagne (22kt Gold)	13 801 809-46
	Champagne (22kt Gold)	13 801 809-47
	Brushed Dark Platinum	13 801 809-99

Required miscellaneous

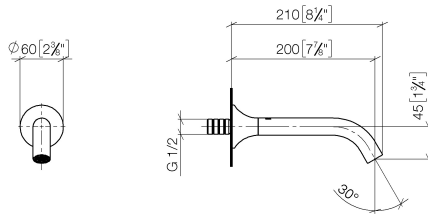
Concealed adapter -

35 080 970-90
0010



13 801 809

mm [inches]



Flow rate chart



Codes & Standards

ASME A112.18.1/CSA B125.1	DIN 4109	ISO 3822	Scottish Water Byelaws
UK Water Supply Regulations	Ü-Zeichen		



VAIA Bath spout for wall mounting - Brushed Bronze

VAIA

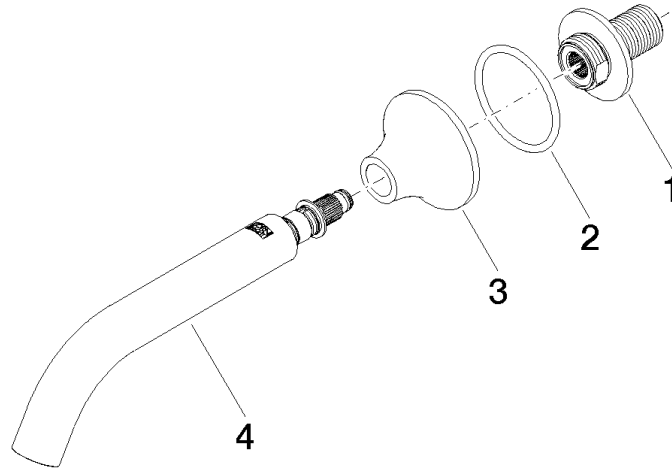
13 801 809

Certificates

WRAS_2306

LGA_29

Product version from 3/13/2017





VAIA Bath spout for wall mounting - Brushed Bronze

VAIA

13 801 809

Spare parts list

Product version from 3/13/2017

No.	Item Number	Name	Quantity used	Delivery time
	09 24 03 269 90	nipple	4	2