


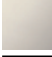
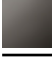

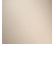



VAIA Bath spout for wall mounting - Champagne (22kt Gold)
VAIA

13 801 809



- 200mm projection
- circular normal flow
- hole diameter 37 mm
- rosette Ø 60 mm
- 1/2" connection
- max. flow 21.5 l/min at 3 bar flow pressure
- WRAS 1801017

	Champagne (22kt Gold)	13 801 809-47
	Chrome	13 801 809-00
	Brushed Platinum	13 801 809-06
	Platinum	13 801 809-08
	Dark Chrome	13 801 809-19
	Brushed Durabronze (23kt Gold)	13 801 809-28
	Brushed Champagne (22kt Gold)	13 801 809-46
	Brushed Dark Platinum	13 801 809-99

Required miscellaneous

Concealed adapter -
35 080 970-90
0010



13 801 809

mm [inches]



Flow rate chart



Codes & Standards

ASME
A112.18.1/CSA
B125.1



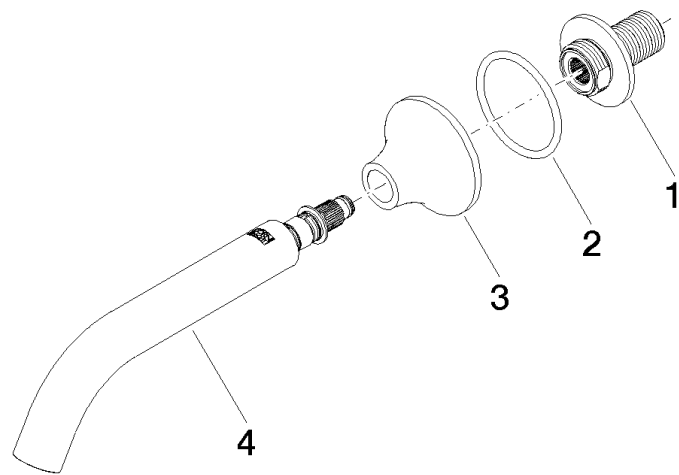
VAIA Bath spout for wall mounting - Champagne (22kt Gold)

VAIA

13 801 809

Certificates

WRAS_2306002. LGA_29290.



Spare parts list

No.	Item Number	Name	Quantity used	Delivery time
1	09 24 03 269 90	nipple	1	2
2	09 14 10 084 90	seal	1	2
3	09 27 80 014-47	rosette	1	30
4	90 28 22 315 00-47	spout	1	30