

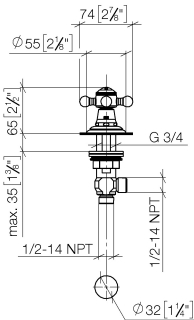
20 000 360



- hole diameter 32 mm
- rosette Ø 55 mm
- supplied with porcelain inserts for both HOT and COLD
- WRAS 1810004

20 000 360

mm [inches]



Flow rate chart



Codes & Standards

ADA



## MADISON Deck valve clockwise closing cold or hot - Chrome

---

MADISON

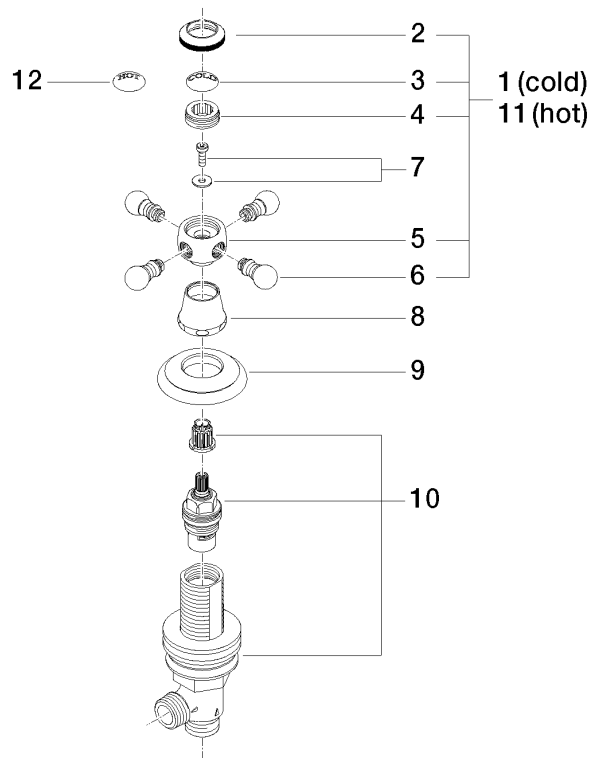
20 000 360

### Certificates

---

WRAS\_1810004.

20 000 360



## Spare parts list

No.	Item Number	Name	Quantity used	Delivery time
1	04 20 36 002 06-00	handle ( cold )	1	10
2	09 20 36 005-00	handle	1	10
3	09 26 01 010 90	accessories	1	2
4	09 20 83 006 90	handle	1	2
5	09 20 36 002-00	handle	1	10
6	09 20 36 004-00	handle	4	10
7	04 30 30 029 00 90	fixing set	1	2
8	09 21 02 046-00	cover	1	10
9	09 27 35 001-00	rosette	1	10
10	90 17 11 040 31 90	side panel	1	2
11	04 20 36 002 07-00	handle ( hot )	1	10
12	09 26 01 011 90	accessories	1	2