

## TARA Deck valve clockwise closing cold or hot - Platinum

TARA

20 000 892

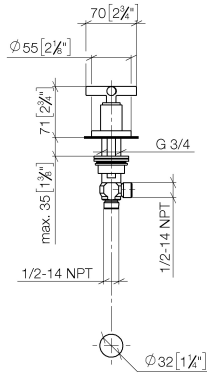


- hole diameter 32 mm
- rosette Ø 55 mm
- WRAS 2112061

	Platinum	20 000 892-08
	Chrome	20 000 892-00
	Brushed Platinum	20 000 892-06
	Dark Chrome	20 000 892-19
	Brushed Durabronze (23kt Gold)	20 000 892-28
	Matte Black	20 000 892-33
	Brushed Bronze	20 000 892-42
	Brushed Champagne (22kt Gold)	20 000 892-46
	Champagne (22kt Gold)	20 000 892-47
	Brushed Chrome	20 000 892-93
	Brushed Dark Platinum	20 000 892-99

20 000 892

mm [inches]



Flow rate chart



Codes & Standards

ADA	ASME A112.18.1	ASME A112.18.1/CSA B125.1	cUPC
Scottish Water Byelaws	UK Water Supply Regulations		



## TARA Deck valve clockwise closing cold or hot - Platinum

---

TARA

20 000 892

### Certificates

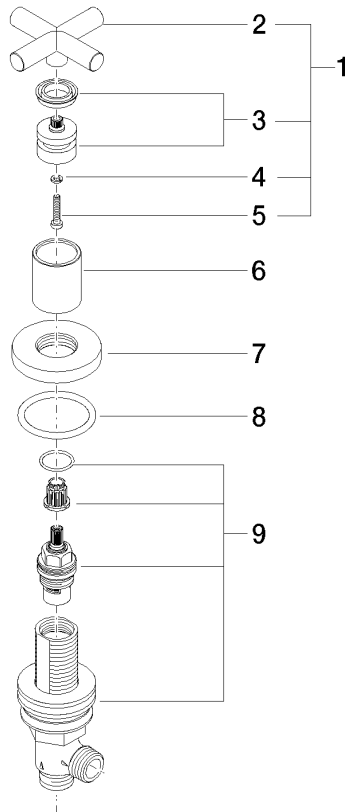
---

IAPMO\_4976

WRAS\_2112

20 000 892

Parts for other  
finishes can be found  
here: [Chrome](#)





## TARA Deck valve clockwise closing cold or hot - Platinum

TARA

20 000 892

### Spare parts list

No.	Item Number	Name	Quantity used	Delivery time
	90 20 89 010 10-08	handle	9	40