

TARA Deck valve clockwise closing cold or hot - Brushed Chrome

TARA

20 000 892



- hole diameter 32 mm
- rosette Ø 55 mm
- WRAS 2112061

	Brushed Chrome	20 000 892-93
	Chrome	20 000 892-00
	Brushed Platinum	20 000 892-06
	Platinum	20 000 892-08
	Dark Chrome	20 000 892-19
	Brushed Durabrass (23kt Gold)	20 000 892-28
	Matte Black	20 000 892-33
	Brushed Champagne (22kt Gold)	20 000 892-46
	Champagne (22kt Gold)	20 000 892-47
	Brushed Dark Platinum	20 000 892-99

20 000 892

mm [inches]



Flow rate chart



Codes & Standards

ADA	ASME
	A112.18.1/CSA
	B125.1



TARA Deck valve clockwise closing cold or hot - Brushed Chrome

TARA

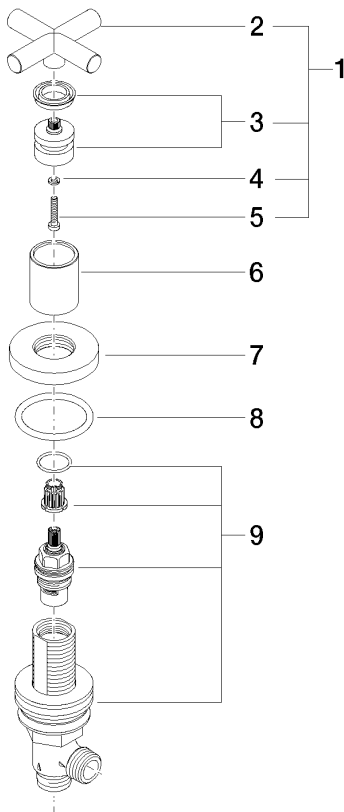
20 000 892

Certificates

WRAS_2112061. IAPMO_4976 (2).

20 000 892

Parts for other
finishes can be found
here: [Chrome](#)



Spare parts list

No.	Item Number	Name	Quantity used	Delivery time
1	90 20 89 010 10-93	handle	1	20
2	09 20 89 010-93	handle	1	60
3	90 12 12 007 00-93	base	1	20
4	90 30 11 029 00 90	disc	1	2
5	90 30 30 075 00 90	screw	1	2
6	09 21 02 140-93	sleeve	1	20
7	09 27 89 105-93	rosette	1	20
8	90 14 10 043 00 90	seal	1	2
9	90 17 11 040 31 90	side panel	1	2