

# CL.1 Deck valve clockwise closing cold - Chrome

20 001 705    Product version from 3/9/2015



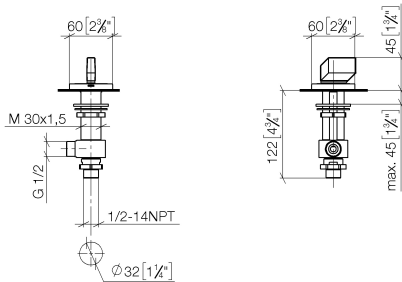
- with WAVES structure
- hole diameter 32 mm
- rosette 60 x 60 mm
- with cold marking
- WRAS

	Chrome	20 001 705-00
	Brushed Platinum	20 001 705-06
	Dark Chrome	20 001 705-19
	Brushed Champagne (22kt Gold)	20 001 705-46
	Champagne (22kt Gold)	20 001 705-47
	Brushed Dark Platinum	20 001 705-99

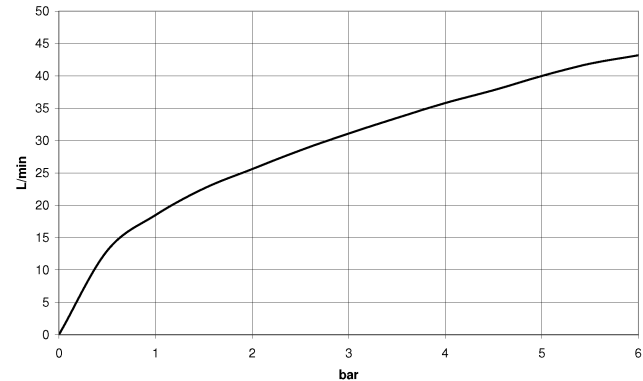
# CL.1 Deck valve clockwise closing cold - Chrome

20 001 705    Product version from 3/9/2015

mm [inches]



Flow rate chart



## Codes & Standards

ADA	ASME A112.18.1	ASME A112.18.1/CSA B125.1	cUPC
DIN 4109	ISO 3822	Scottish Water Byelaws	UK Water Supply Regulations

Ü-Zeichen



# CL.1 Deck valve clockwise closing cold - Chrome

---

20 001 705 Product version from 3/9/2015

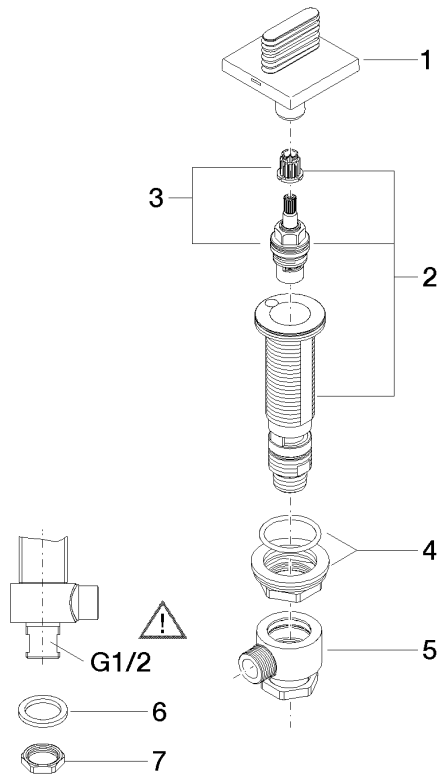
## Certificates

---

IAPMO_4976	WRAS_2103	LGA_28
------------	-----------	--------

**CL.1 Deck valve clockwise closing cold - Chrome**

20 001 705 Product version from 3/9/2015



**Spare parts list**

No.	Item Number	Name	Quantity used	Delivery time
1	90 20 70 055 04-00	handle ( cold )	1	10
2	04 17 11 058 33 90	side panel	1	2
3	90 90 03 133 00 90	top	1	2
4	04 23 10 032 78 90	fixing set	1	2
5	04 17 11 023 10 90	distributor	1	2
6	90 23 30 040 00-00	threaded connector	1	10
7	09 30 11 059 90	disc	1	2
8	09 23 10 012 90	nut	1	2