

MADISON Bath mixer for wall mounting with hand shower set - Brushed Durabrand (23kt Gold)

MADISON







25 023 360



- 160mm projection
- Hand shower: COMPACT RAIN, max. flow rate 7.6 l/min (at 3 bar)
- spout: rectangular normal flow
- wall bracket
- rotary diverter for bath/shower
- rosette Ø 70 mm
- 1/2" connection
- gauge 153 mm
- metal shower hose 1250mm with integrated anti-twist protection
- max. spout flow rate 26 l/min

Note: Local building codes may require the use of an anti-scald device. Please refer to remote pressure balance valve (35 910 970 90)

Intrinsic protection against back flow.

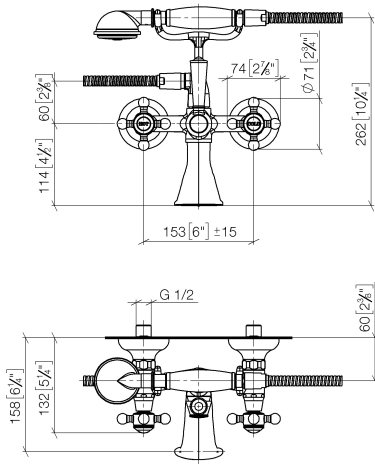
	Brushed Durabrand (23kt Gold)	25 023 360-28 0010
	Chrome	25 023 360-00 0010
	Brushed Platinum	25 023 360-06 0010
	Platinum	25 023 360-08 0010
	Durabrand (23kt Gold)	25 023 360-09 0010
	Brushed Dark Platinum	25 023 360-99 0010



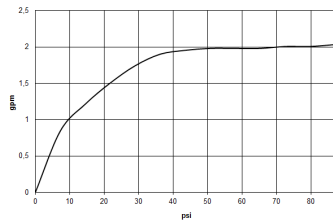
MADISON Bath mixer for wall mounting with hand shower set - Brushed
Durabron (23kt Gold)

MADISON

25 023 360
mm [inches]



Flow rate chart



Codes & Standards

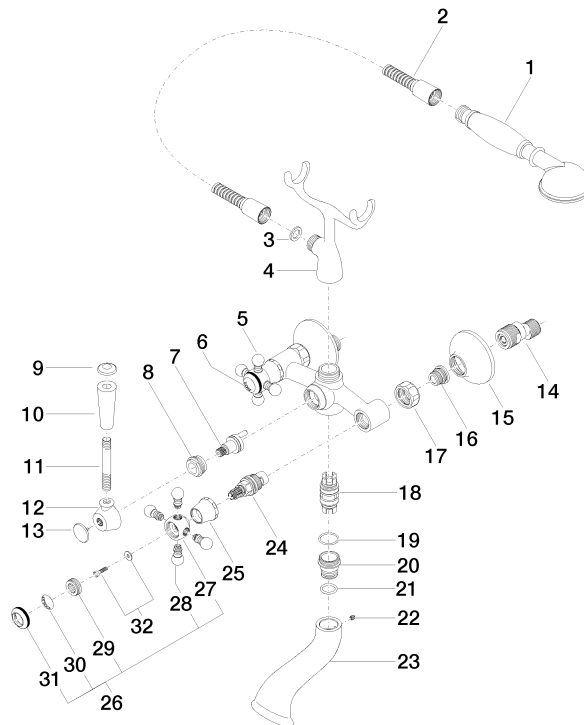
California Energy
Commission
(CEC)

MADISON Bath mixer for wall mounting with hand shower set - Brushed Durabron (23kt Gold)

MADISON

25 023 360

Parts for other
finishes can be found
here: Chrome





MADISON Bath mixer for wall mounting with hand shower set - Brushed Durabross (23kt Gold)

MADISON

25 023 360

Spare parts list

No.	Item Number	Name	Quantity used	Delivery time
	28 002 970-28 0010	MADISON Metal hand shower with porcelain insert (white) FlowReduce - Brushed Durabross (23kt Gold)	49	20