

TARA Bath mixer for wall mounting - Chrome

25 100 892



- 240mm projection
- circular normal flow
- rotary diverter for bath/shower
- 3/8" shower outlet
- slide-on rosettes Ø 65 mm
- 1/2" connection
- gauge 150 mm - 15 mm
- max. flow 22 l/min at 3 bar flow pressure
- WRAS

Note: Local building codes may require the use of an anti-scald device. Please refer to remote pressure balance valve (35 910 970 90) Intrinsic protection against back flow.

Stand pipes combination possible on request (special production).

Note: Local building codes may require the use of an anti-scald device. Please refer to remote pressure balance valve (35 910 970 90)

Intrinsic protection against back flow.

Stand pipes combination possible on request (special production).

Required miscellaneous



Concealed adapter -

- please order two adapters (USA only)

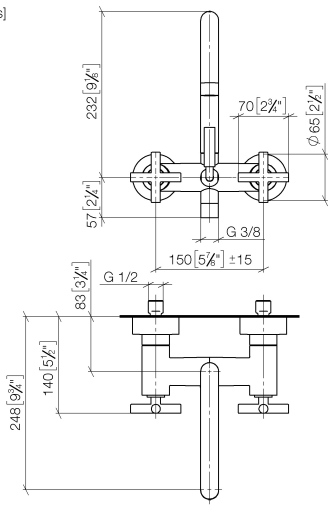
35 080 970-90
0010



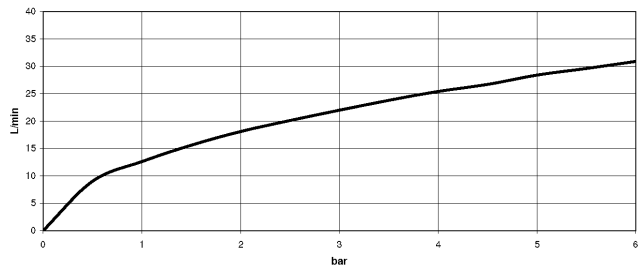
TARA Bath mixer for wall mounting - Chrome

25 100 892

mm [inches]



Flow rate chart



Codes & Standards

California Energy
Commission
(CEC)

EN 1717

Scottish Water
Byelaws

UK Water Supply
Regulations



TARA Bath mixer for wall mounting - Chrome

25 100 892

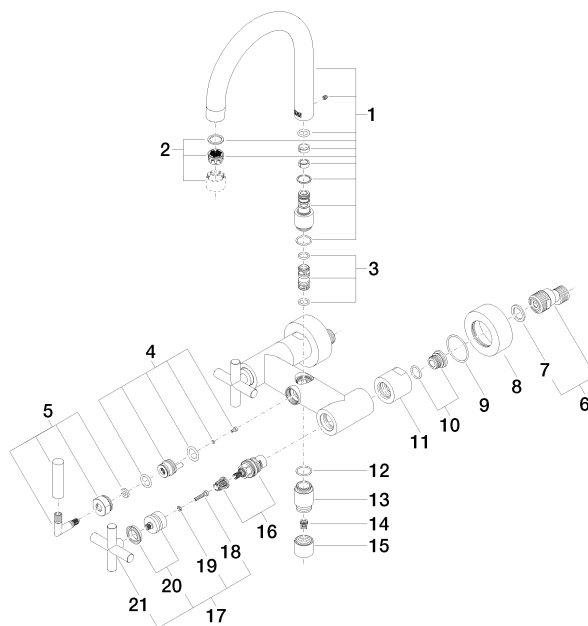
Certificates

WRAS_2210

Belgaqua_21-026-2

TARA Bath mixer for wall mounting - Chrome

25 100 892



Spare parts list

No.	Item Number	Name	Quantity used	Delivery time
1	90 28 22 219 00-00	spout	1	10
2	90 23 01 024 00-00	aerator	1	10
3	90 21 10 011 00 90	diverter	1	2
4	90 15 01 005 00 90	insert	1	2
5	90 18 20 025 00-00	diverter	1	10
6	04 11 04 030 00 90	connection	2	2
7	09 14 20 010 90	seal	2	2
8	09 27 89 103-00	rosette	2	10
9	09 14 10 034 90	seal	2	2
10	04 29 05 014 00 90	nipple	2	2
11	09 23 10 064-00	nut	2	10
12	90 14 10 032 00 90	seal	1	2
13	09 24 03 121-00	nipple	1	10
14	09 23 01 131 90	back-flow preventer	1	2
15	09 21 02 143-00	sleeve	1	10
16	90 90 03 131 00 90	top	2	2
17	90 20 89 010 10-00	handle	2	10
18	90 30 30 075 00 90	screw	2	2
19	90 30 11 029 00 90	disc	2	2
20	90 12 12 007 00-00	base	2	10
21	09 20 89 010-00	handle	2	60