

MADISON Shower set without hand shower - Brushed Dark Platinum

MADISON







26 413 360



- slide bar
- Pipe diameter 18 mm
- rosette Ø 60 mm
- gauge 850 mm
- metal shower hose 1750mm with integrated anti-twist protection
- shower hose connector 1/2"
- WRAS 2009048

This article does not include a hand shower!

NOTE: Hand shower sold separately. Please see hand shower options under the miscellaneous articles section of each series.

	Brushed Dark Platinum	26 413 360-99
	Chrome	26 413 360-00
	Brushed Platinum	26 413 360-06
	Platinum	26 413 360-08
	Durabrand (23kt Gold)	26 413 360-09
	Brushed Durabrand (23kt Gold)	26 413 360-28

Recommended miscellaneous

	MADISON Wall elbow - Brushed Dark Platinum	28 450 410-99 0010
---	---	--------------------

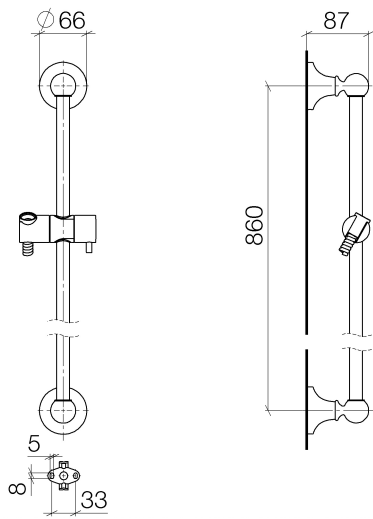
Required miscellaneous

	MADISON Hand shower FlowReduce - Brushed Dark Platinum	28 002 978-99 0010
<ul style="list-style-type: none"> • spray head Ø 95mm • Hand shower see page {PAGE} • Three settings: COMPACT RAIN, COMPACT SOFT FLOW, COMPACT AQUAPRESSURE FLOW, max. flow rate l/min (at 3 bar) 		

Required miscellaneous

	MADISON Metal hand shower with porcelain insert (white) FlowReduce - Brushed Dark Platinum	28 002 970-99 0010
---	---	--------------------

26 413 360



Codes & Standards

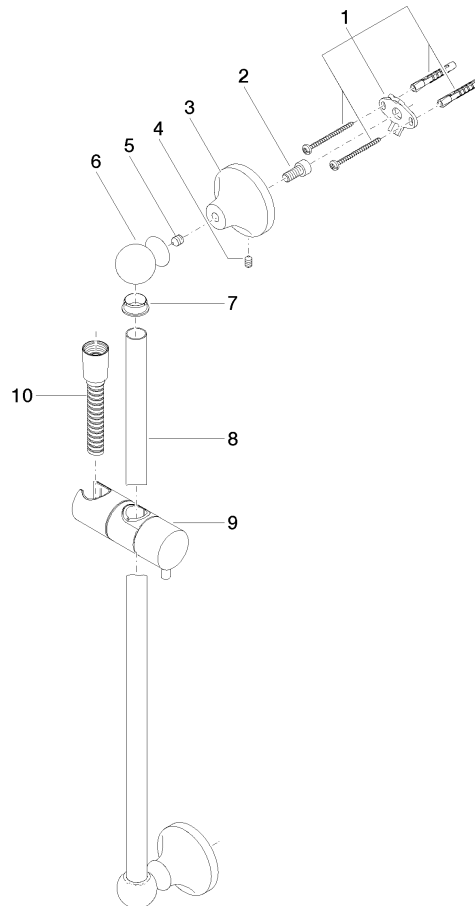
ASME A112.18.1	cUPC	Scottish Water Byelaws	UK Water Supply Regulations
----------------	------	---------------------------	--------------------------------

Certificates

IAPMO_4976	WRAS_2009
------------	-----------

26 413 360

Parts for other
finishes can be found
here: [Chrome](#)





MADISON Shower set without hand shower - Brushed Dark Platinum

MADISON

26 413 360

Spare parts list

No.	Item Number	Name	Quantity used	Delivery time
	90 17 20 708 00 90	fixing set	17	2