

## MADISON Shower set without hand shower - Brushed Dark Platinum

MADISON







26 413 370




- slide bar
- Pipe diameter 18 mm
- rosettes Ø 60 mm
- gauge 850 mm
- metal shower hose 1750mm with integrated anti-twist protection
- shower hose connector 1/2"
- WRAS 2009048

This article does not include a hand shower!

NOTE: Hand shower sold separately. Please see hand shower options under the miscellaneous articles section of each series.

	Brushed Dark Platinum	26 413 370-99
	Chrome	26 413 370-00
	Brushed Platinum	26 413 370-06
	Platinum	26 413 370-08
	Durabrand (23kt Gold)	26 413 370-09
	Brushed Durabrand (23kt Gold)	26 413 370-28

### Recommended miscellaneous

	<b>Concealed adapter -</b>	35 080 970-90 0010
---	----------------------------	--------------------


### Required miscellaneous

	<b>MADISON Hand shower FlowReduce - Brushed Dark Platinum</b>	28 002 978-99 0010
<ul style="list-style-type: none"> <li>• spray head Ø 95mm</li> <li>• Hand shower see page {PAGE}</li> <li>• Three settings: COMPACT RAIN, COMPACT SOFT FLOW, COMPACT AQUAPRESSURE FLOW, max. flow rate l/min (at 3 bar)</li> </ul>		

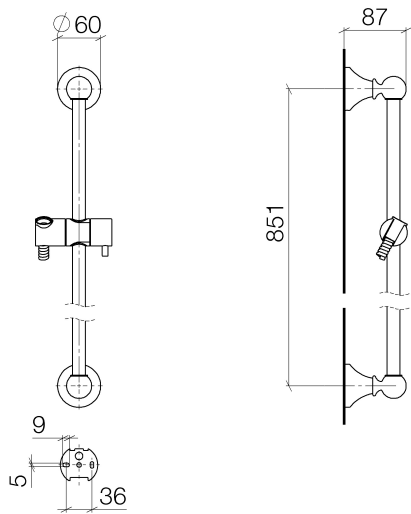
### Required miscellaneous

	<b>MADISON Metal hand shower with porcelain insert (white) FlowReduce - Brushed Dark Platinum</b>	28 002 970-99 0010
---	---	--------------------

### Recommended miscellaneous

	<b>MADISON Wall elbow - Brushed Dark Platinum</b>	28 450 370-99
---	---	---------------

26 413 370

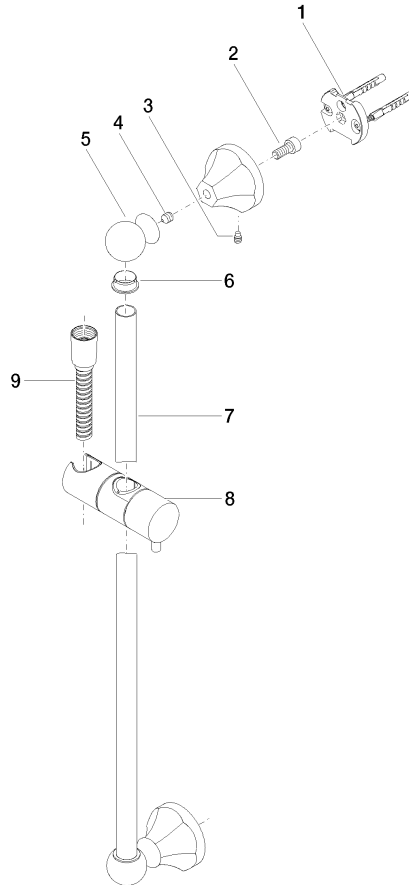


Codes & Standards

ASME A112.18.1	cUPC	Scottish Water Byelaws	UK Water Supply Regulations
----------------	------	---------------------------	--------------------------------

Certificates

IAPMO_4976	WRAS_2009
------------	-----------





MADISON Shower set without hand shower - Brushed Dark Platinum

MADISON

26 413 370

Spare parts list

No.	Item Number	Name	Quantity used	Delivery time
	05 17 97 507 00 90	fixing set	15	2