

## VAIA Showerpipe with shower mixer without hand shower - Brushed Platinum

VAIA

26 632 809



- shower with fixed riser projection 450mm
  - Rain shower: PURE RAIN, max. flow rate 6.8 l/min (at 3 bar)
  - rain shower Ø 300 mm
  - rain shower with anti-scale system
  - rotary diverter for fixed-riser shower/hand shower
  - height of fittings up to rain shower (bottom edge) 960mm
  - height of fittings up to top edge of elbow 1262mm
  - rosette for shower holder Ø 60mm
  - slide-on rosettes Ø 60 mm
  - gauge 150 mm - 13 mm
  - 1500 mm metal shower hose
  - 1/2" connection
  - Pipe diameter 23.5 mm
  - quick clearing
  - This product reduces water consumption by % (compared to requirements of EPA '92)
  - This product can contribute to Water Use Reduction in LEED® Green Building Rating
- Note: Local building codes may require the use of an anti-scald device. Please refer to remote pressure balance valve (35 910 970 90) Intrinsic protection against back flow.**

**NOTE: Hand shower sold separately. Please see hand shower options under the miscellaneous articles section of each series.**

Note: Local building codes may require the use of an anti-scald device. Please refer to remote pressure balance valve (35 910 970 90)

Intrinsic protection against back flow.

NOTE: Hand shower sold separately. Please see hand shower options under the miscellaneous articles section of each series.

	Brushed Platinum	26 632 809-06 0010
	Chrome	26 632 809-00 0010
	Platinum	26 632 809-08 0010
	Dark Chrome	26 632 809-19 0010
	Brushed Durabronze (23kt Gold)	26 632 809-28 0010
	Brushed Champagne (22kt Gold)	26 632 809-46 0010
	Champagne (22kt Gold)	26 632 809-47 0010
	Brushed Dark Platinum	26 632 809-99 0010

## Required miscellaneous



**Concealed adapter -**  
• please order two adapters (USA only)

35 080 970-90  
0010

## Required miscellaneous



**Hand shower FlowReduce -**  
**Brushed Platinum**

28 012 979-06  
0010

## Required miscellaneous



**Hand shower FlowReduce -**  
**Brushed Platinum**

28 016 979-06  
0010

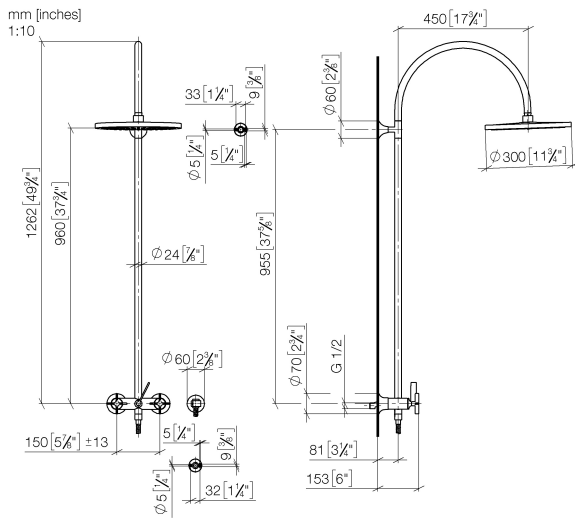
## Required miscellaneous



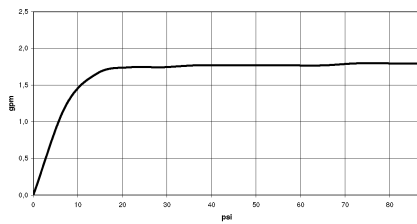
**Hand shower FlowReduce -**  
**Brushed Platinum**

28 018 979-06  
0010

26 632 809



### Flow rate chart



### Codes & Standards

California Energy  
Commission  
(CEC)

Water Sense





## VAIA Showerpipe with shower mixer without hand shower - Brushed Platinum

---

VAIA

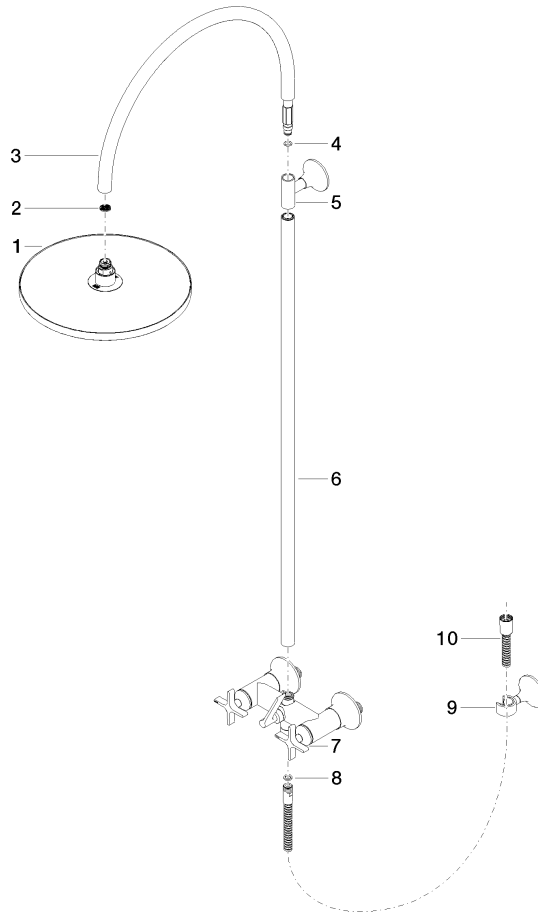
26 632 809

### Certificates

---

IAPMO\_11777.

26 632 809



## Spare parts list

No.	Item Number	Name	Quantity used	Delivery time
1	04 12 05 091 10-06	shower	1	10
2	09 23 01 039 90	sieve	1	2
3	04 28 22 346 00-06	pipe	1	10
4	09 14 10 008 90	seal	1	2
5	90 17 11 148 00-06	holder	1	10
6	04 28 22 349 00-06	pipe	1	10
7	04 17 10 020 03-06	fitting	1	10
8	90 14 20 026 00 90	seal	1	2
9	28 050 809-06	VAIA Wall bracket - Brushed Platinum	1	10
10	28 304 970-06	Metal shower hose 1/2" x 3/8" x 1500 mm - Brushed Platinum	1	2