

MADISON Bath shower set for bath rim or tile edge installation - Chrome

MADISON


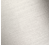




27 502 370



- 225mm projection
- complete hand shower set: normal flow
- spout: circular, air-enriched flow
- complete hand shower set with anti-scale system
- automatic bath/shower diverter
- height of mixer 185 mm
- height up to aerator 140 mm
- hole diameter valve 32 mm
- hole diameter spout 32 mm
- hole diameter for complete hand shower set 32 mm
- rosette for spout Ø 70mm
- rosette for complete hand shower set Ø 60mm
- rosette for deck valve Ø 60mm
- metal shower hose 1750mm with integrated anti-twist protection
- max. spout flow rate 23 l/min
- max. flow for complete hand shower set 6.8 l/min

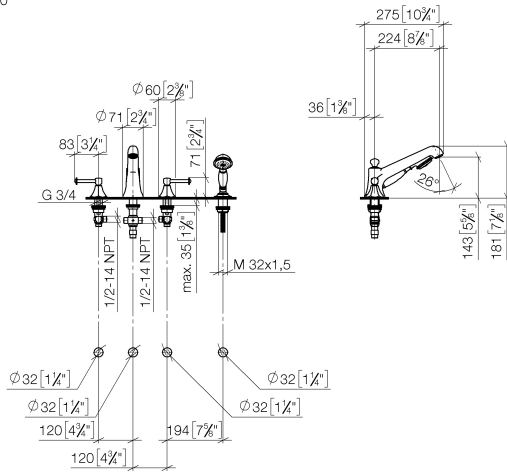
Intrinsic protection against back flow.

Note: Local building codes may require the use of an anti-scald device. Please refer to remote pressure balance valve (35 910 970 90)

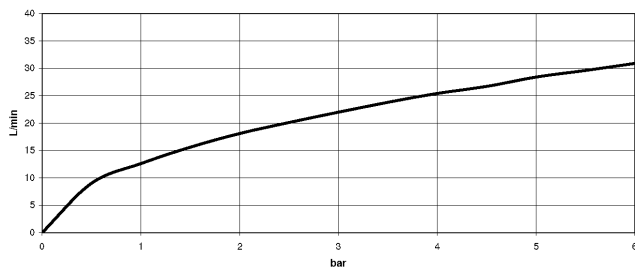
	Chrome	27 502 370-00
	Brushed Platinum	27 502 370-06
	Platinum	27 502 370-08
	Durabrand (23kt Gold)	27 502 370-09
	Brushed Durabrand (23kt Gold)	27 502 370-28
	Brushed Dark Platinum	27 502 370-99

27 502 370

mm [inches]
1:10



Flow rate chart



Codes & Standards

DIN 4109

EN 1717

ISO 3822

Ü-Zeichen



MADISON Bath shower set for bath rim or tile edge installation - Chrome

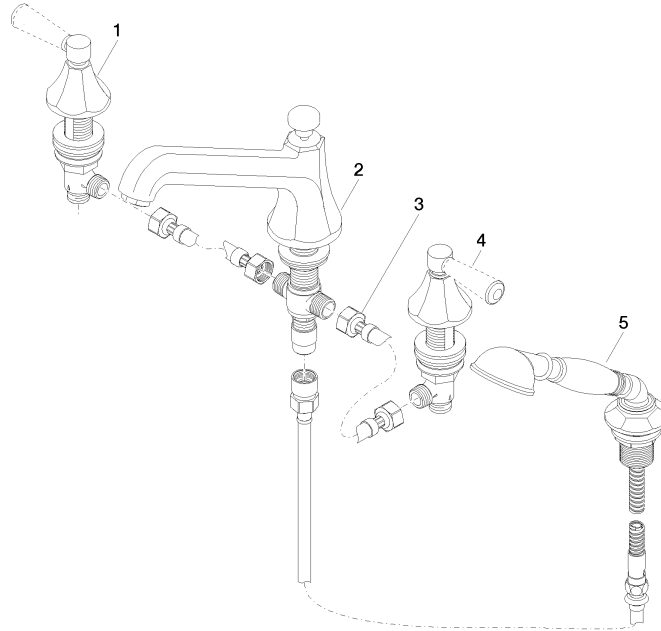
MADISON

27 502 370

Certificates

LGA_8

Belgaqua_21-380-2





MADISON Bath shower set for bath rim or tile edge installation - Chrome

MADISON

27 502 370

Spare parts list

No.	Item Number	Name	Quantity used	Delivery time
	20 000 370-00	side panel	6	60