

MADISON Bath shower set for bath rim or tile edge installation - Durabrand (23kt Gold)

MADISON


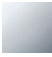

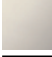


27 502 370



- 225mm projection
- complete hand shower set: normal flow
- spout: circular, air-enriched flow
- complete hand shower set with anti-scale system
- automatic bath/shower diverter
- height of mixer 185 mm
- height up to aerator 140 mm
- hole diameter valve 32 mm
- hole diameter spout 32 mm
- hole diameter for complete hand shower set 32 mm
- rosette for spout Ø 70mm
- rosette for complete hand shower set Ø 60mm
- rosette for deck valve Ø 60mm
- metal shower hose 1750mm with integrated anti-twist protection
- max. spout flow rate 23 l/min
- max. flow for complete hand shower set 6.8 l/min

Intrinsic protection against back flow.

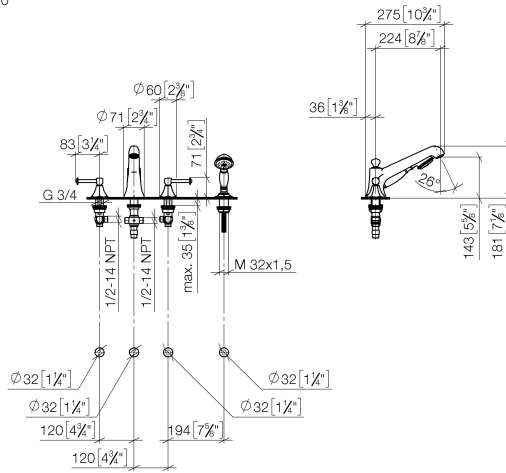
Note: Local building codes may require the use of an anti-scald device. Please refer to remote pressure balance valve (35 910 970 90)

	Durabrand (23kt Gold)	27 502 370-09
	Chrome	27 502 370-00
	Brushed Platinum	27 502 370-06
	Platinum	27 502 370-08
	Brushed Durabrand (23kt Gold)	27 502 370-28
	Brushed Dark Platinum	27 502 370-99

MADISON Bath shower set for bath rim or tile edge installation - Durabrass (23kt Gold)

MADISON

27 502 370
mm [inches]
1:10



Flow rate chart

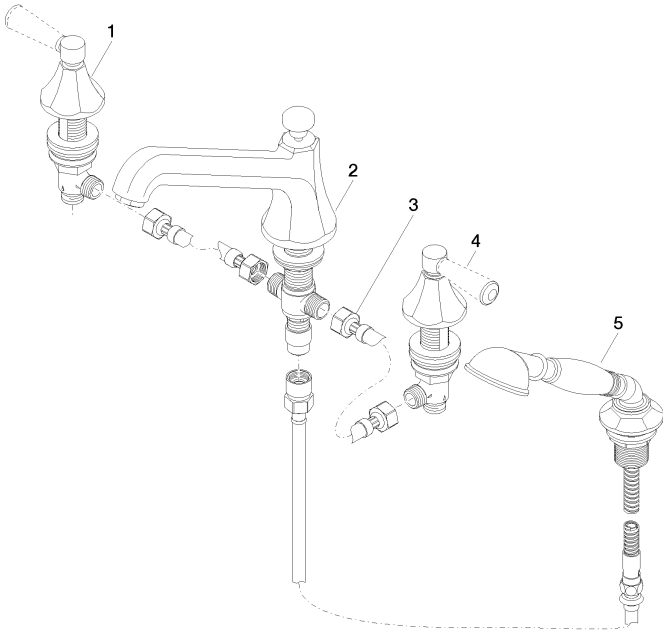


Certificates

LGA_8028. Belgaqua_21-380-27_4.

27 502 370

Parts for other finishes can be found here: [Chrome](#)



Spare parts list

No.	Item Number	Name	Quantity used	Delivery time
1	20 000 370-09	side panel	1	60
2	13 502 380-09	spout	1	60
3	12 502 970 90	High pressure hose 1/2" x 1/2" x 400 mm -	2	2
4	20 000 371-09	side panel	1	60
5	27 703 370-09	shower set	1	60