

MADISON Bath shower set for bath rim or tile edge installation - Brushed Durabron (23kt Gold)

MADISON

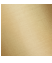





27 502 370



- 225mm projection
- complete hand shower set: normal flow
- spout: circular, air-enriched flow
- complete hand shower set with anti-scale system
- automatic bath/shower diverter
- height of mixer 185 mm
- height up to aerator 140 mm
- hole diameter valve 32 mm
- hole diameter spout 32 mm
- hole diameter for complete hand shower set 32 mm
- rosette for spout Ø 70mm
- rosette for complete hand shower set Ø 60mm
- rosette for deck valve Ø 60mm
- metal shower hose 1750mm with integrated anti-twist protection
- max. spout flow rate 23 l/min
- max. flow for complete hand shower set 6.8 l/min

Intrinsic protection against back flow.

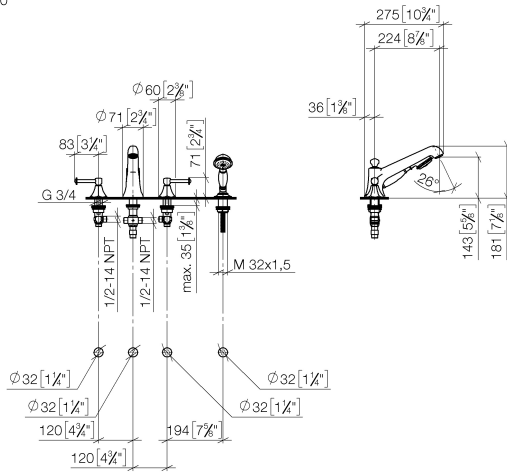
Note: Local building codes may require the use of an anti-scald device. Please refer to remote pressure balance valve (35 910 970 90)

	Brushed Durabron (23kt Gold)	27 502 370-28
	Chrome	27 502 370-00
	Brushed Platinum	27 502 370-06
	Platinum	27 502 370-08
	Durabron (23kt Gold)	27 502 370-09
	Brushed Dark Platinum	27 502 370-99

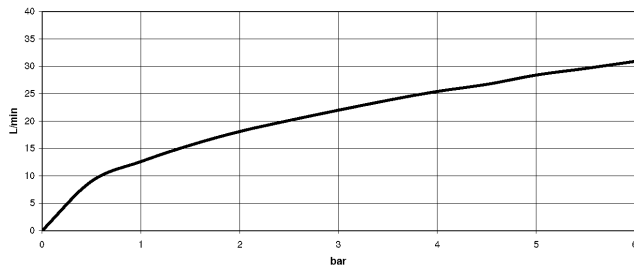
MADISON Bath shower set for bath rim or tile edge installation - Brushed Durabronz (23kt Gold)

MADISON

27 502 370
mm [inches]
1:10



Flow rate chart



Codes & Standards

DIN 4109

EN 1717

ISO 3822

Ü-Zeichen



MADISON Bath shower set for bath rim or tile edge installation - Brushed
Durabrass (23kt Gold)

MADISON

27 502 370

Certificates

LGA_8

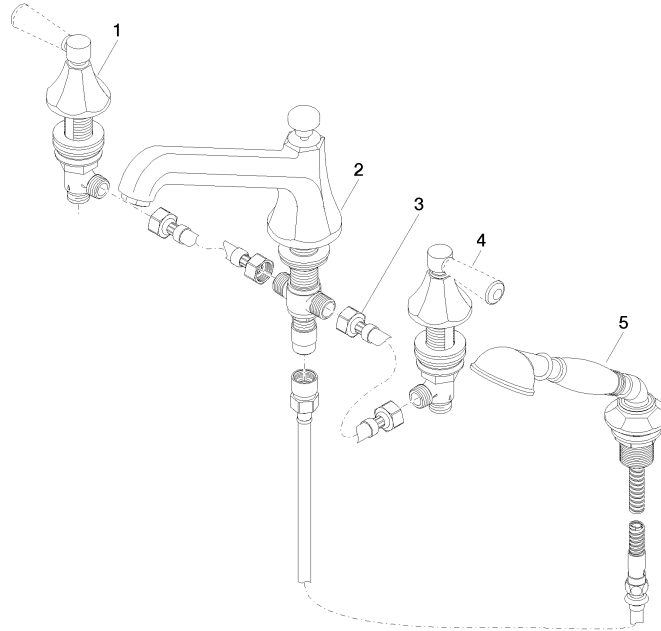
Belgaqua_21-380-2

**MADISON Bath shower set for bath rim or tile edge installation - Brushed
Durabronz (23kt Gold)**

MADISON

27 502 370

Parts for other
finishes can be found
here: [Chrome](#)





MADISON Bath shower set for bath rim or tile edge installation - Brushed Durabrass (23kt Gold)

MADISON

27 502 370

Spare parts list

No.	Item Number	Name	Quantity used	Delivery time
	20 000 370-28	side panel	6	60