

## CYO Bath shower set for bath rim or tile edge installation - Chrome

CYO





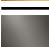
27 632 811



- 167mm projection
- spout: rectangular normal flow
- max. flow 23.8 l/min at 3 bar flow pressure
- Hand shower: COMPACT RAIN, max. flow rate 6.8 l/min (at 3 bar)
- complete hand shower set with anti-scale system
- automatic bath/shower diverter
- height of mixer 198 mm
- height up to aerator 133 mm
- hole diameter spout 28 mm
- hole diameter for complete hand shower set 32 mm
- rosette for mixer 60 x 60mm
- rosette for complete hand shower set 60 x 60mm
- metal shower hose 1750mm with integrated anti-twist protection
- WRAS 2204006

Intrinsic protection against back flow.

Note: Local building codes may require the use of an anti-scald device. Please refer to remote pressure balance valve (35 910 970 90)

|  |                                   |               |
|--|-----------------------------------|---------------|
|  | Chrome                            | 27 632 811-00 |
|  | Brushed Platinum                  | 27 632 811-06 |
|  | Dark Chrome                       | 27 632 811-19 |
|  | Brushed Durabronze<br>(23kt Gold) | 27 632 811-28 |
|  | Brushed Dark<br>Platinum          | 27 632 811-99 |





## CYO Bath shower set for bath rim or tile edge installation - Chrome

CYO

27 632 811

### Certificates

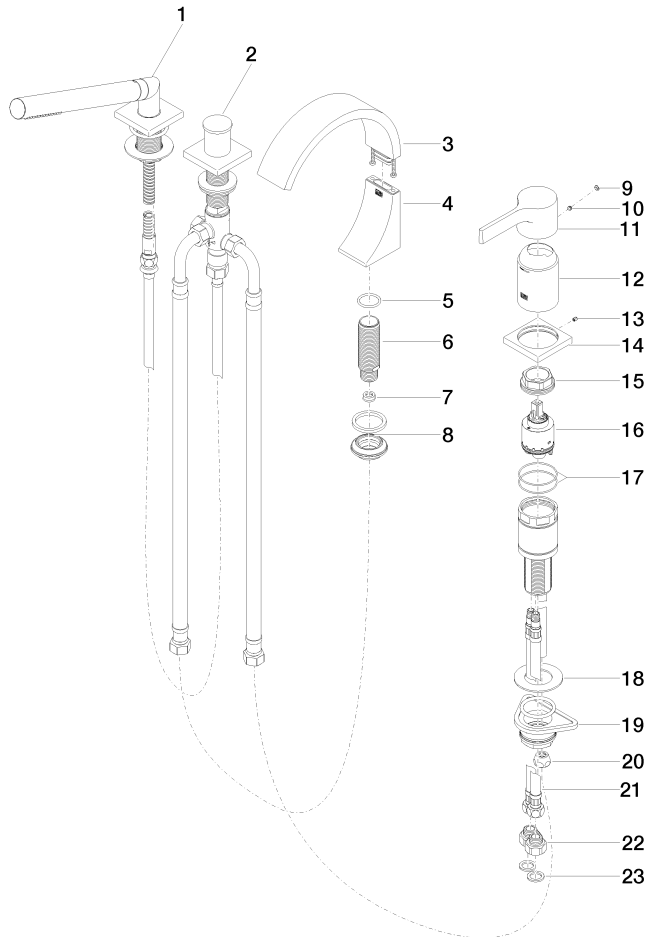
LGA\_38

IAPMO\_4976

Belgaqua\_21-380-2 WRAS\_2204

27 632 811

Parts for other  
finishes can be found  
here: Brushed  
Platinum





CYO Bath shower set for bath rim or tile edge installation - Chrome

CYO

27 632 811

Spare parts list

| No. | Item Number   | Name  | Quantity used | Delivery time |
|-----|---------------|---|---------------|---------------|
|     | 27 702 980-00 | Hand shower set for bath rim or tile edge installation - Chrome | 27            | 10            |