

Hand shower set with integrated shower holder FlowReduce - Brushed Dark Platinum

TARA

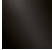






27 802 660



Fits: TARA, VAIA, META

- COMPACT RAIN, max. flow rate 6.8 l/min (at 3 bar)
- with anti-scale system
- 3/8" shower outlet
- metal shower hose 1250mm with integrated anti-twist protection
- rosette Ø 60 mm
- 1/2" connection
- This product reduces water consumption by % (compared to requirements of EPAct '92)
- This product can contribute to Water Use Reduction in LEED® Green Building Rating
- This product can help a building meet the requirements of Green Building Rating Systems, e.g. LEED®, BREEAM®, DGNB

Intrinsic protection against back flow.

| | | |
|---|--------------------------------|--------------------|
|  | Brushed Dark Platinum | 27 802 660-99 0010 |
|  | Chrome | 27 802 660-00 0010 |
|  | Brushed Platinum | 27 802 660-06 0010 |
|  | Platinum | 27 802 660-08 0010 |
|  | Dark Chrome | 27 802 660-19 0010 |
|  | Light Gold | 27 802 660-26 0010 |
|  | Brushed Light Gold | 27 802 660-27 0010 |
|  | Brushed Durabronze (23kt Gold) | 27 802 660-28 0010 |
|  | Matte Black | 27 802 660-33 0010 |
|  | Brushed Bronze | 27 802 660-42 0010 |
|  | Brushed Champagne (22kt Gold) | 27 802 660-46 0010 |
|  | Champagne (22kt Gold) | 27 802 660-47 0010 |
|  | Brushed Chrome | 27 802 660-93 0010 |

Recommended miscellaneous

Concealed adapter -

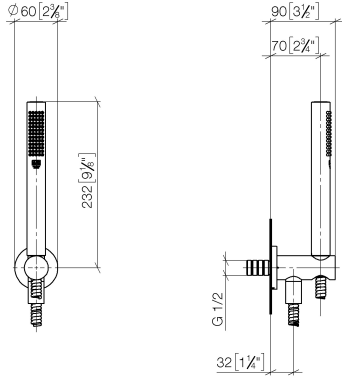
35 080 970-90
0010



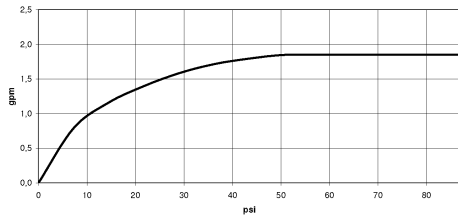
**Hand shower set with integrated shower holder FlowReduce - Brushed Dark
Platinum**

TARA

27 802 660
mm [inches]



Flow rate chart



Codes & Standards

| | |
|---------------|-------------------|
| ASME | California Energy |
| A112.18.1/CSA | Commission |
| B125.1 | (CEC) |



Hand shower set with integrated shower holder FlowReduce - Brushed Dark Platinum

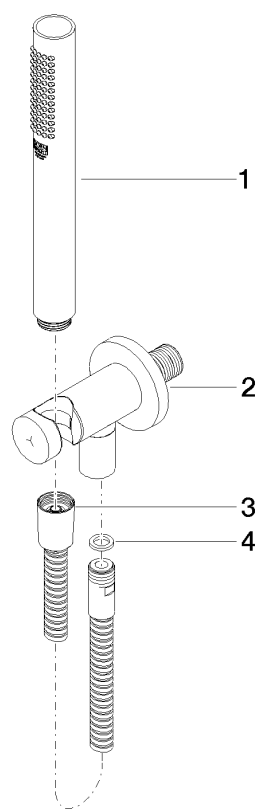
TARA

27 802 660

Certificates

LGA_29985.

27 802 660



Spare parts list

| No. | Item Number | Name | Quantity used | Delivery time |
|-----|--------------------|--|---------------|---------------|
| 1 | 90 12 11 140 30-99 | shower | 1 | 30 |
| 2 | 28 490 660-99 | Wall elbow with integrated shower holder - Brushed Dark Platinum | 1 | 30 |
| 3 | 90 30 02 072 00-99 | Metal shower hose 1/2" x 3/8" x 1250 mm - Brushed Dark Platinum | 1 | 30 |
| 4 | 90 14 20 026 00 90 | seal | 1 | 2 |