

## LISSÉ Wall elbow - Matte Black








LISSÉ

28 450 845



- 3/8" shower outlet
  - rosette 60 x 78 mm
  - 1/2" connection
  - WRAS 2310091
- Intrinsic protection against back flow.**

Intrinsic protection against back flow.

	Matte Black	28 450 845-33
	Chrome	28 450 845-00
	Brushed Platinum	28 450 845-06
	Dark Chrome	28 450 845-19
	Brushed Light Gold	28 450 845-27
	Brushed Chrome	28 450 845-93
	Brushed Dark Platinum	28 450 845-99

### Required miscellaneous

**Concealed adapter -**

35 080 970-90  
0010



28 450 845

mm [inches]



Flow rate chart



Codes & Standards

ASME A112.18.1/CSA B125.1	Scottish Water Byelaws	UK Water Supply Regulations
---------------------------------	---------------------------	--------------------------------



## LISSE Wall elbow - Matte Black

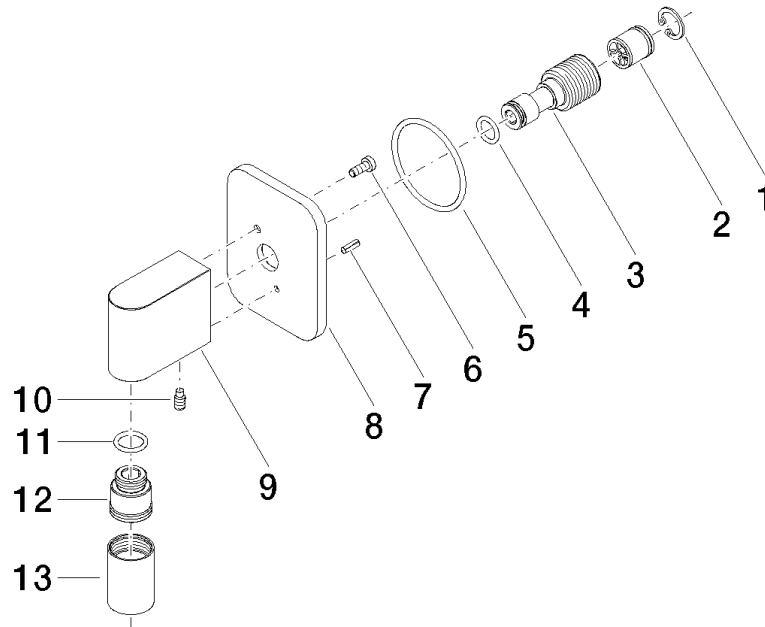
LISSE

28 450 845

Certificates

WRAS\_2310

**Product version from 3/2/2021**





## LISSÉ Wall elbow - Matte Black

LISSÉ

28 450 845

### Spare parts list

#### Product version from 3/2/2021

No.	Item Number	Name	Quantity used	Delivery time
	09 16 01 014 90	ring	13	2