

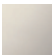
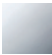




MADISON Body spray without volume control FlowReduce - Platinum

MADISON

28 518 360



- spray head Ø 55mm
- ball-joint pivotable through 25° (in any direction)
- rain flow
- rosette Ø 55 mm
- 1/2" connection
- max. flow 5 l/min
- This product can help a building meet the requirements of Green Building Rating Systems, e.g. LEED®, BREEAM®, DGNB

	Platinum	28 518 360-08
	Chrome	28 518 360-00
	Brushed Platinum	28 518 360-06
	Durabrass (23kt Gold)	28 518 360-09
	Brushed Durabrass (23kt Gold)	28 518 360-28
	Brushed Dark Platinum	28 518 360-99

Required miscellaneous

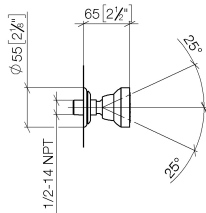
Concealed adapter -

35 080 970-90 0010

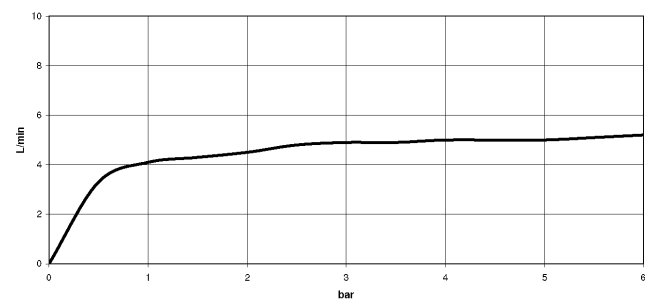


28 518 360

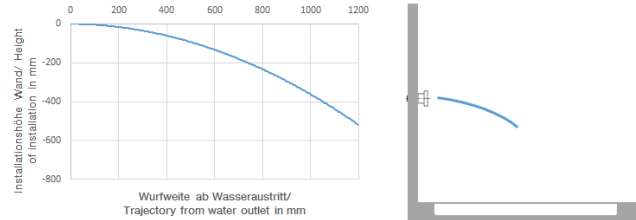
mm [inches]



Flow rate chart



Trajectory diagram



Codes & Standards

ASME	California Energy
A112.18.1/CSA	Commission
B125.1	(CEC)



## MADISON Body spray without volume control FlowReduce - Platinum

---

MADISON

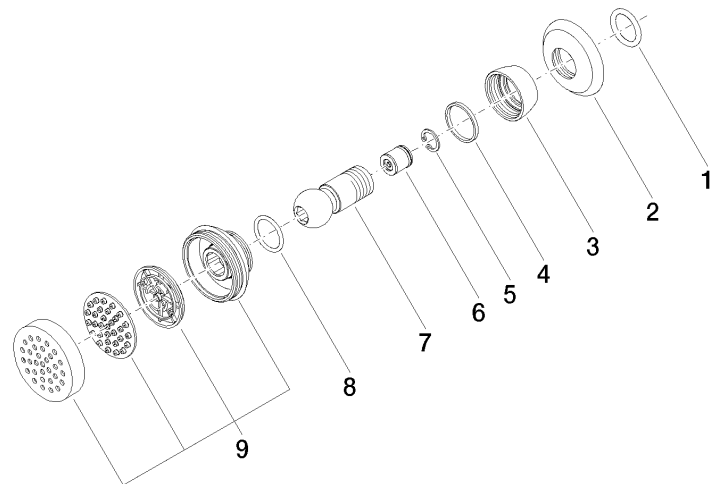
28 518 360

### Certificates

---

LGA\_38651.

28 518 360



### Spare parts list

No.	Item Number	Name	Quantity used	Delivery time
1	90 14 10 026 00 90	seal	1	2
2	09 27 35 003-08	rosette	1	40
3	09 23 30 027-08	nut	1	60
4	09 14 15 010 90	ring	1	2
5	09 16 01 014 90	ring	1	2
6	09 23 01 048 90	back-flow preventer	1	2
7	09 21 40 016-08	connection	1	40
8	09 14 10 015 90	seal	1	2
9	90 12 05 028 00-08	casing ( completely )	1	40