

## Body spray without volume control FlowReduce - Dark Chrome

IMO

28 518 782



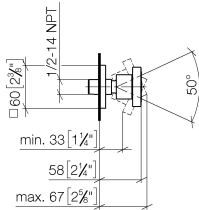
Fits: IMO, MEM, CL.1, CYO

- spray head Ø 55mm
- ball-joint pivotable through 25° (in any direction)
- rain flow
- anti-scale system
- rosette 60 x 60 mm
- 1/2" connection
- max. flow 5 l/min
- WRAS 1809018
- This product can help a building meet the requirements of Green Building Rating Systems, e.g. LEED®, BREEAM®, DGNB

	Dark Chrome	28 518 782-19
	Chrome	28 518 782-00
	Brushed Platinum	28 518 782-06
	Platinum	28 518 782-08
	Brushed Light Gold	28 518 782-27
	Brushed Durabronze (23kt Gold)	28 518 782-28
	Matte Black	28 518 782-33
	Brushed Champagne (22kt Gold)	28 518 782-46
	Champagne (22kt Gold)	28 518 782-47
	Brushed Chrome	28 518 782-93
	Brushed Dark Platinum	28 518 782-99

28 518 782

mm [inches]



Flow rate chart



Trajectory diagram



## Codes & Standards

ASME  
A112.18.1/CSA  
B125.1

California Energy  
Commission  
(CEC)

DIN 4109

ISO 3822

Ü-Zeichen



## Body spray without volume control FlowReduce - Dark Chrome

---

IMO

28 518 782

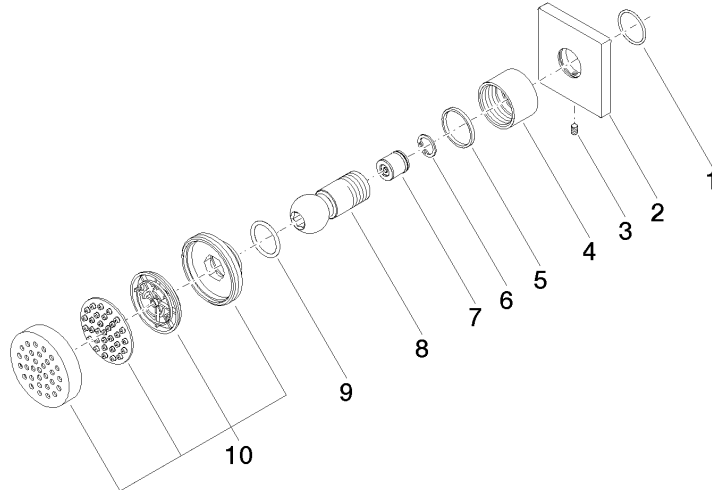
### Certificates

---

LGA\_38

**Product version from 3/10/2014**

Parts for other  
finishes can be found  
here: Chrome





## Body spray without volume control FlowReduce - Dark Chrome

IMO

28 518 782

### Spare parts list

#### Product version from 3/10/2014

No.	Item Number	Name	Quantity used	Delivery time
	09 14 10 098 90	seal	10	2