

Body spray without volume control FlowReduce - Champagne (22kt Gold)

TARA

28 518 979



- spray head Ø 55mm
- ball-joint pivotable through 25° (in any direction)
- HORIZONTAL RAIN, max. flow rate 5 l/min (at 3 bar)
- with anti-scale system
- rosette Ø 55 mm
- 1/2" connection
- This product can help a building meet the requirements of Green Building Rating Systems, e.g. LEED®, BREEAM®, DGNB

Fits: TARA, LISSÉ, VAIA, META

	Champagne (22kt Gold)	28 518 979-47
	Chrome	28 518 979-00
	Brushed Platinum	28 518 979-06
	Platinum	28 518 979-08
	Durabrand (23kt Gold)	28 518 979-09
	Dark Chrome	28 518 979-19
	Light Gold	28 518 979-26
	Brushed Light Gold	28 518 979-27
	Brushed Durabrand (23kt Gold)	28 518 979-28
	Matte Black	28 518 979-33
	Brushed Bronze	28 518 979-42
	Brushed Champagne (22kt Gold)	28 518 979-46
	Brushed Chrome	28 518 979-93
	Brushed Dark Platinum	28 518 979-99

Required miscellaneous

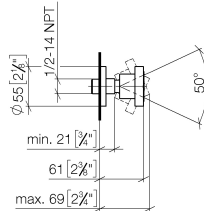
Concealed adapter -

35 080 970-90
0010

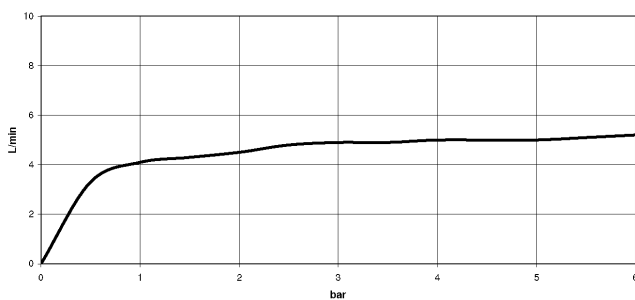


28 518 979

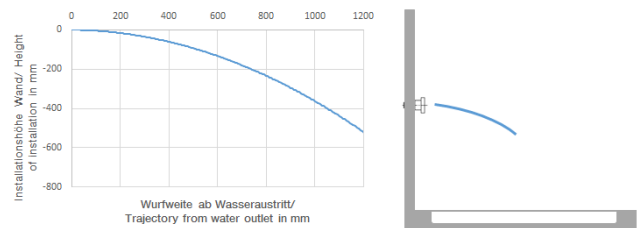
mm [inches]



Flow rate chart



Trajectory diagram



Codes & Standards

ASME
A112.18.1/CSA
B125.1

California Energy
Commission
(CEC)

DIN 4109

ISO 3822

Ü-Zeichen



Body spray without volume control FlowReduce - Champagne (22kt Gold)

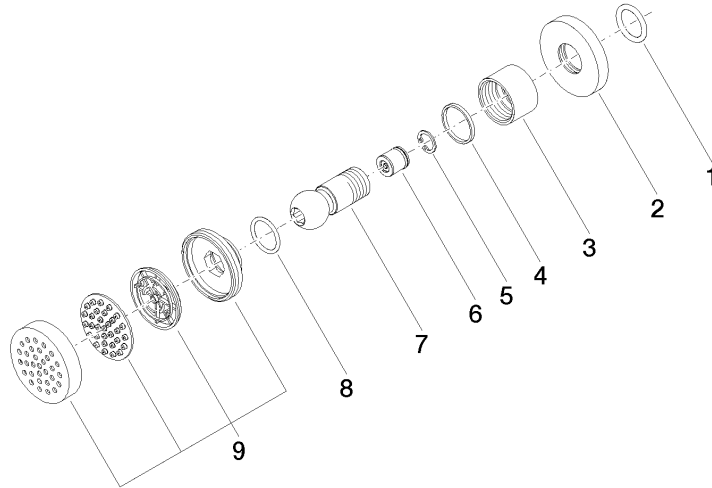
TARA

28 518 979

Certificates

LGA_38

Product version from 4/1/2024





Body spray without volume control FlowReduce - Champagne (22kt Gold)

TARA

28 518 979

Spare parts list

Product version from 4/1/2024

No.	Item Number	Name	Quantity used	Delivery time
	90 14 10 026 00 90	seal	9	2