

Rain shower with ceiling fixing 220 mm - Brushed Dark Platinum

IMO

28 669 970



Fits: IMO, TARA, LISSÉ, VAIA, META, CYO

- PURE RAIN, max. flow rate 6.8 l/min (at 3 bar)
- with anti-scale system
- rain shower Ø 220 mm
- rosette Ø 60 mm optional
- 1/2" connection
- Function from: 6 l/min
- quick clearing
- This product reduces water consumption by % (compared to requirements of EPAct '92)
- This product can contribute to Water Use Reduction in LEED® Green Building Rating
- This product can help a building meet the requirements of Green Building Rating Systems, e.g. LEED®, BREEAM®, DGNB

| | | |
|--|--------------------------------|--------------------|
|  | Brushed Dark Platinum | 28 669 970-99 0010 |
|  | Chrome | 28 669 970-00 0010 |
|  | Brushed Platinum | 28 669 970-06 0010 |
|  | Platinum | 28 669 970-08 0010 |
|  | Dark Chrome | 28 669 970-19 0010 |
|  | Light Gold | 28 669 970-26 0010 |
|  | Brushed Light Gold | 28 669 970-27 0010 |
|  | Brushed Durabronze (23kt Gold) | 28 669 970-28 0010 |
|  | Matte Black | 28 669 970-33 0010 |
|  | Brushed Bronze | 28 669 970-42 0010 |
|  | Brushed Champagne (22kt Gold) | 28 669 970-46 0010 |
|  | Champagne (22kt Gold) | 28 669 970-47 0010 |
|  | Brushed Chrome | 28 669 970-93 0010 |

Required miscellaneous



Concealed wall elbow -

- max. recess depth 163 mm
- min. recess depth 90 mm

35 085 970-90
0010

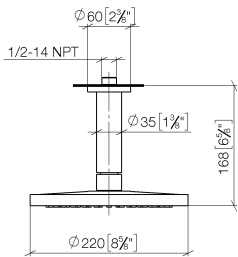


Rain shower with ceiling fixing 220 mm - Brushed Dark Platinum

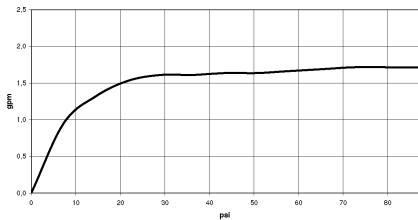
IMO

28 669 970

mm [Inches]



Flow rate chart



Codes & Standards

| | | | |
|----------------|---------------------------|------------------------------------|------|
| ASME A112.18.1 | ASME A112.18.1/CSA B125.1 | California Energy Commission (CEC) | cUPC |
| EPA WaterSense | Water Sense | WaterSense | |



Rain shower with ceiling fixing 220 mm - Brushed Dark Platinum

IMO

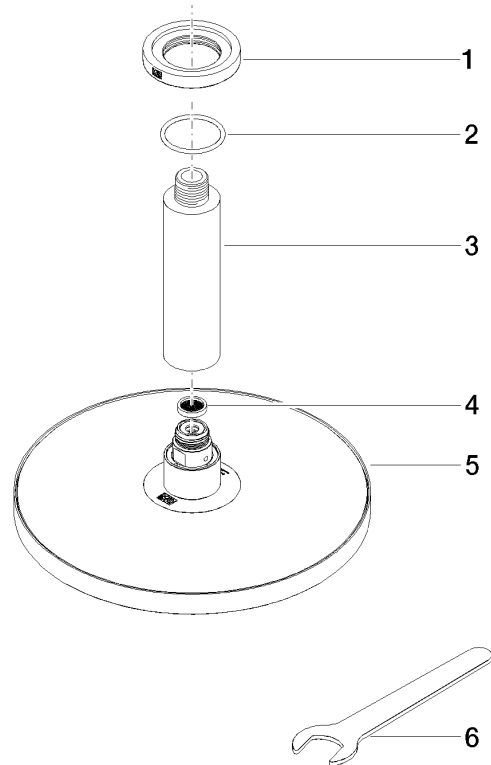
28 669 970

Certificates

IAPMO_4976

IAPMO_11

Product version from 3/13/2017





Rain shower with ceiling fixing 220 mm - Brushed Dark Platinum

IMO

28 669 970

Spare parts list

Product version from 3/13/2017

| No. | Item Number | Name | Quantity used | Delivery time |
|-----|-----------------|---------|---------------|---------------|
| | 09 27 22 040-99 | rosette | 6 | 30 |