

Rain shower with wall fixing 300 x 240 mm - Brushed Light Gold

MEM

28 765 980



Fits: MEM, CL.1

- 450mm projection
- PURE RAIN, max. flow rate 6.8 l/min (at 3 bar)
- Function from: 6 l/min
- with anti-scale system
- rain shower 300 x 240mm
- rosette 60 x 60 mm
- 1/2" connection
- quick clearing
- This product reduces water consumption by % (compared to requirements of EPAct '92)
- This product can contribute to Water Use Reduction in LEED® Green Building Rating
- This product can help a building meet the requirements of Green Building Rating Systems, e.g. LEED®, BREEAM®, DGNB

| | | |
|--|--------------------------------|--------------------|
|  | Brushed Light Gold | 28 765 980-27 0010 |
|  | Chrome | 28 765 980-00 0010 |
|  | Brushed Platinum | 28 765 980-06 0010 |
|  | Platinum | 28 765 980-08 0010 |
|  | Dark Chrome | 28 765 980-19 0010 |
|  | Brushed Durabronze (23kt Gold) | 28 765 980-28 0010 |
|  | Matte Black | 28 765 980-33 0010 |
|  | Brushed Champagne (22kt Gold) | 28 765 980-46 0010 |
|  | Champagne (22kt Gold) | 28 765 980-47 0010 |
|  | Brushed Chrome | 28 765 980-93 0010 |
|  | Brushed Dark Platinum | 28 765 980-99 0010 |

Required miscellaneous

Concealed wall elbow -

35 085 970-90
0010

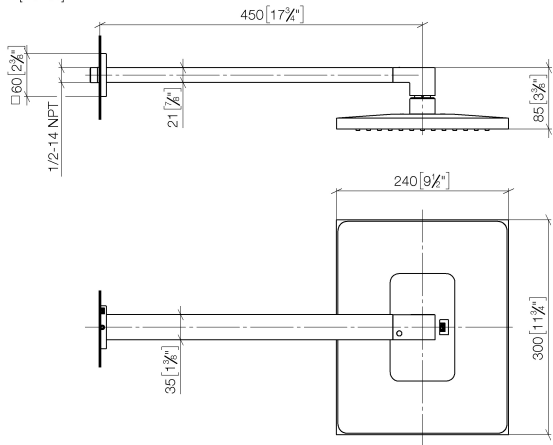


Rain shower with wall fixing 300 x 240 mm - Brushed Light Gold

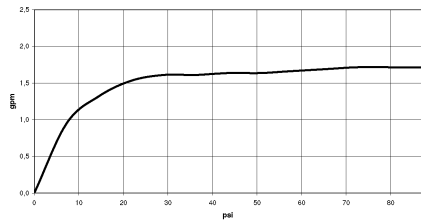
MEM

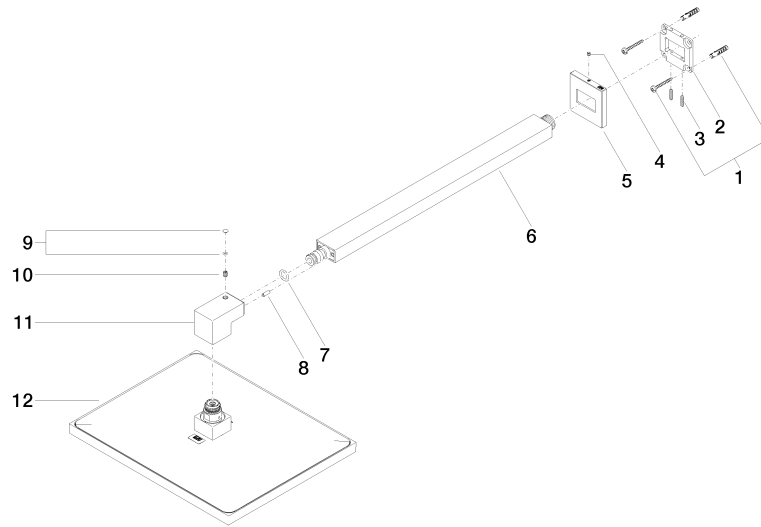
28 765 980

mm [inches]



Flow rate chart







Rain shower with wall fixing 300 x 240 mm - Brushed Light Gold

MEM

28 765 980

Spare parts list