



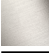
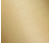
LULU Rain shower with wall fixing 300 x 240 mm - Brushed Dark Platinum

LULU

28 786 710



- 450mm projection
- PURE RAIN, max. flow rate 6.8 l/min (at 3 bar)
- Function from: 6 l/min
- with anti-scale system
- rain shower 300 x 240mm
- rosette 78 x 60 mm
- 1/2" connection
- quick clearing
- This product reduces water consumption by % (compared to requirements of EPAct '92)
- This product can contribute to Water Use Reduction in LEED® Green Building Rating
- This product can help a building meet the requirements of Green Building Rating Systems, e.g. LEED®, BREEAM®, DGNB

	Brushed Dark Platinum	28 786 710-99 0010
	Chrome	28 786 710-00 0010
	Brushed Platinum	28 786 710-06 0010
	Brushed Durabronze (23kt Gold)	28 786 710-28 0010

Required miscellaneous



- Concealed wall elbow -** 35 085 970-90
- max. recess depth 163 mm 0010
 - min. recess depth 90 mm

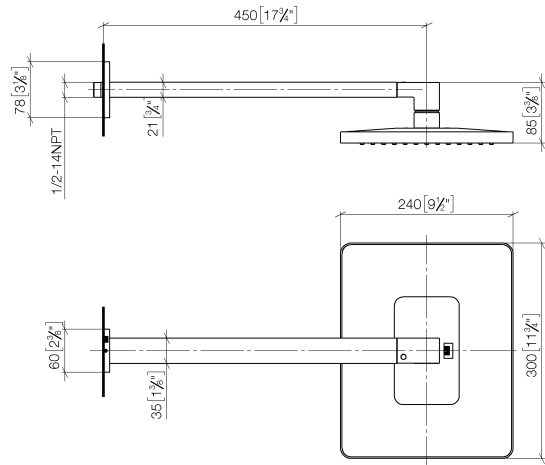


LULU Rain shower with wall fixing 300 x 240 mm - Brushed Dark Platinum

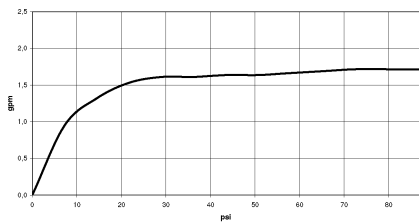
LULU

28 786 710

mm [inches]



Flow rate chart



Codes & Standards

ASME A112.18.1	ASME A112.18.1/CSA B125.1	California Energy Commission (CEC)	cUPC
EPA WaterSense	Water Sense	WaterSense	



LULU Rain shower with wall fixing 300 x 240 mm - Brushed Dark Platinum

LULU

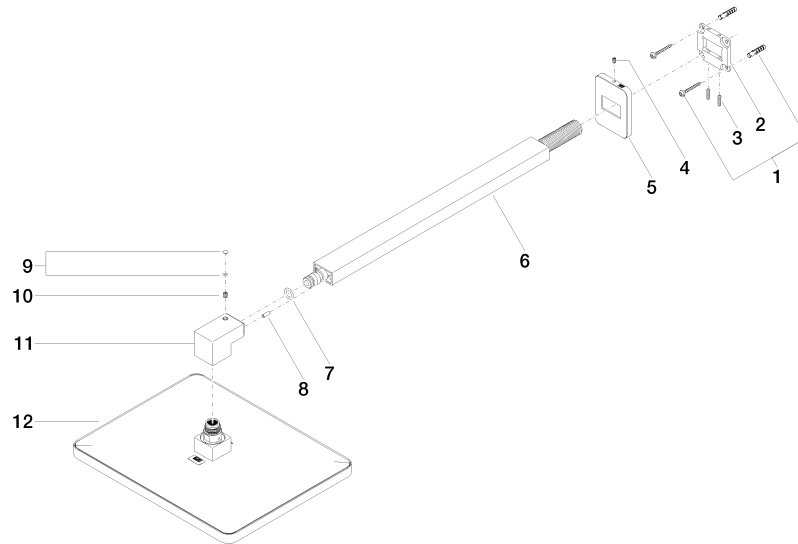
28 786 710

Certificates

IAPMO_4976

IAPMO_11

Product version from 3/13/2017





LULU Rain shower with wall fixing 300 x 240 mm - Brushed Dark Platinum

LULU

28 786 710

Spare parts list

Product version from 3/13/2017

No.	Item Number	Name	Quantity used	Delivery time
	04 30 31 032 00 90	fixing set	13	2