

## SYMETRICS Two-way diverter - Chrome

---

29 125 985



- rotary diverter
- hole diameter 37 mm
- rosette 60 x 60 mm
- male thread 1/2" connection
- max. flow 23.5 l/min

Not suitable for combining with Perfecto (12 614 970 90).

### Recommended miscellaneous

---



**Hose set -**

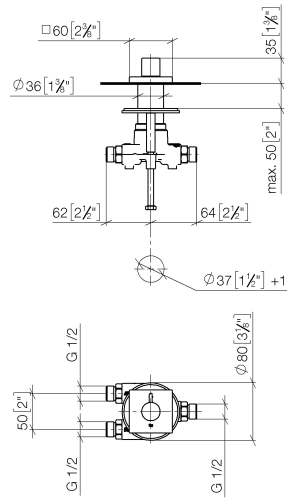
- ATTENTION: Hose set is required for combining 2 outlet points with a diverter

12 509 970-90  
0010

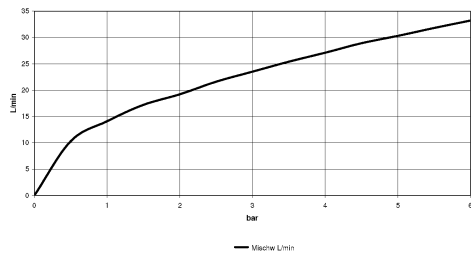
**SYMETRICS Two-way diverter - Chrome**

29 125 985

mm [inches]



**Flow rate chart**



**Codes & Standards**

ASME  
A112.18.1/CSA  
B125.1

California Energy  
Commission  
(CEC)



## SYMETRICS Two-way diverter - Chrome

---

29 125 985

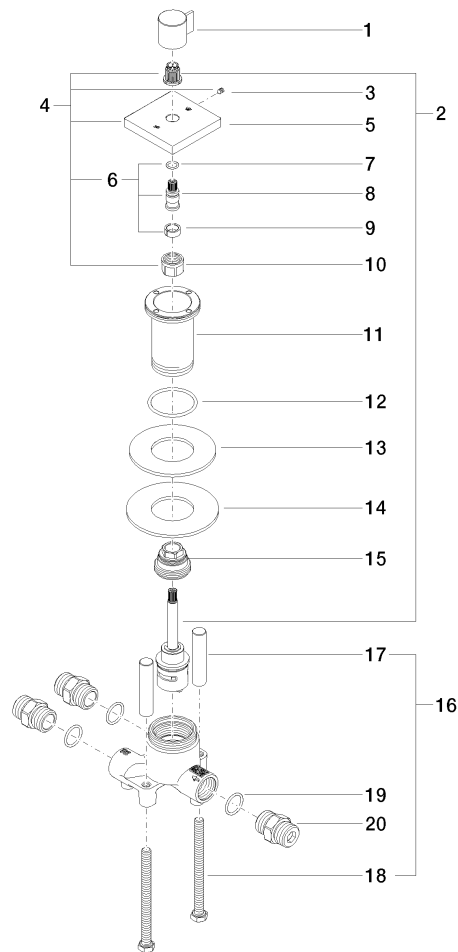
### Certificates

---

LGA\_18893.

## SYMETRICS Two-way diverter - Chrome

29 125 985



### Spare parts list

No.	Item Number	Name	Quantity used	Delivery time
1	09 20 98 001-00	handle	1	10
2	90 90 03 161 00 90	diverter	1	2
3	90 31 11 007 00 90	pin	1	2
4	04 27 98 013 00-00	rosette	1	10
5	09 27 98 013-00	rosette	1	10
6	04 29 06 020 00-00	spindle	1	10
7	90 14 10 060 00 90	seal	1	2
8	09 29 06 020-00	spindle	1	10
9	90 14 15 020 03 90	ring	1	2
10	90 23 30 023 00 90	nut	1	2
11	09 30 01 105 90	sleeve	1	2
12	09 14 10 143 90	seal	1	2
13	09 14 05 059 90	seal	1	2
14	09 30 11 136 90	disc	1	2
15	09 24 04 223 90	nipple	1	2
16	04 30 30 153 00 90	fixing set	1	2
17	09 18 40 114 90	sleeve	2	2
18	09 30 30 153 90	screw	2	2
19	90 14 10 010 00 90	seal	3	2
20	90 24 03 168 00 90	nipple	3	2