

Two-way diverter - Matte Black

CL.1

29 126 740



- rotary diverter
- hole diameter 37 mm
- without rosette
- handle Ø 60mm
- 1/2" connection
- max. flow 23.5 l/min at 3 bar flow pressure

Not suitable for combining with Perfecto (12 614 970 90).

Fits: CL.1, CYO

Recommended miscellaneous



Hose set -

- ATTENTION: Hose set is required for combining 2 outlet points with a diverter

12 509 970-90

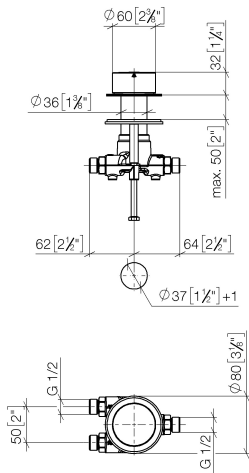
0010

Two-way diverter - Matte Black

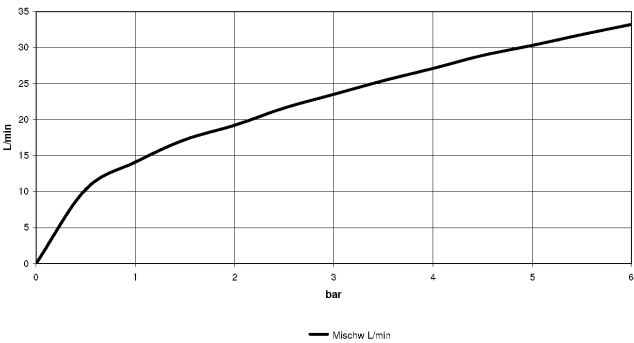
CL.1

29 126 740

mm [inches]



Flow rate chart



Codes & Standards

ASME A112.18.1	ASME A112.18.1/CSA B125.1	California Energy Commission (CEC)	cUPC
DIN 4109	ISO 3822	Ü-Zeichen	



Two-way diverter - Matte Black

CL.1

29 126 740

Certificates

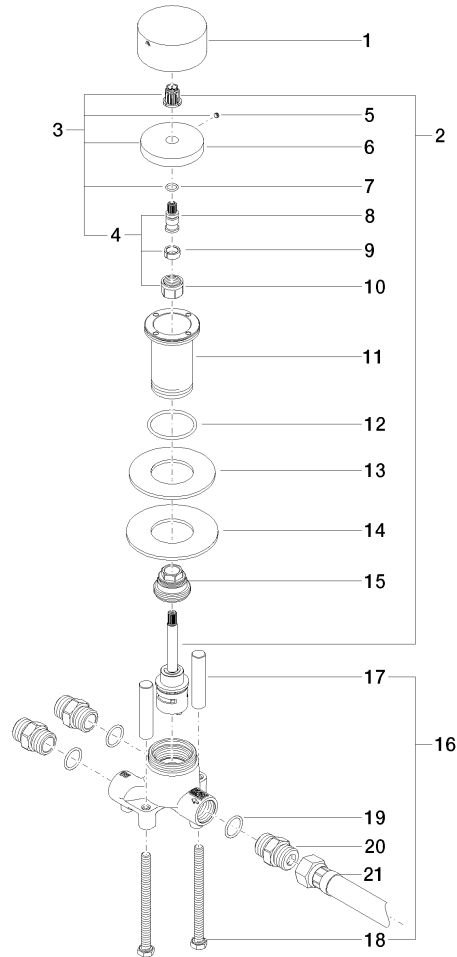
IAPMO_4976

LGA_18

Two-way diverter - Matte Black

CL.1

29 126 740





Two-way diverter - Matte Black

CL.1

29 126 740

Spare parts list

No.	Item Number	Name	Quantity used	Delivery time
	09 20 74 007-33	handle	27	30