

30 010 892



- 140mm projection
- fixed spout
- circular, air-enriched flow
- adapter with male thread 3/4"
- hole diameter 32 mm
- rosette Ø 55 mm
- max. flow 4.5 l/min
- lead-free
- This product can help a building meet the requirements of Green Building Rating Systems, e.g. LEED®, BREEAM®, DGNB

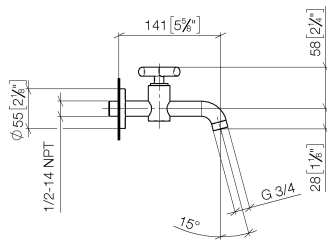


TARA Wall-mounted valve cold water without pop-up waste - Matte Black

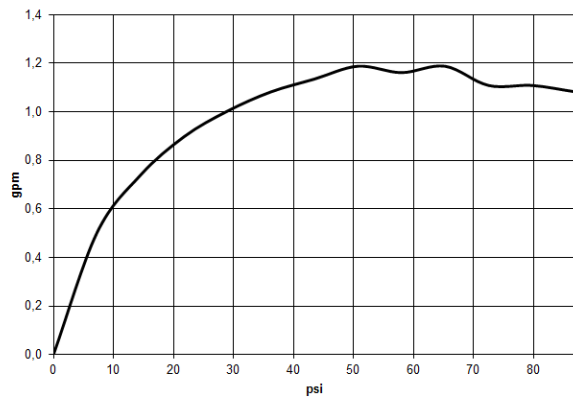
TARA

30 010 892

mm [inches]



Flow rate chart



Codes & Standards

ADA	California Energy Commission (CEC)	NSF/ANSI 372	NSF372
-----	------------------------------------	--------------	--------



## TARA Wall-mounted valve cold water without pop-up waste - Matte Black

---

TARA

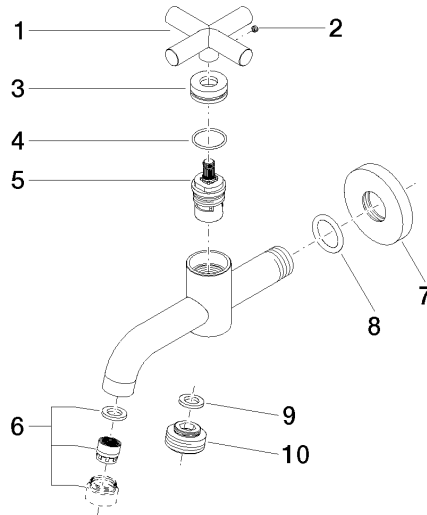
30 010 892

### Certificates

---

IAPMO\_6

**Product version from 7/1/2016**





## TARA Wall-mounted valve cold water without pop-up waste - Matte Black

TARA

30 010 892

### Spare parts list

#### Product version from 7/1/2016

No.	Item Number	Name	Quantity used	Delivery time
	09 20 89 011-33	handle	10	30