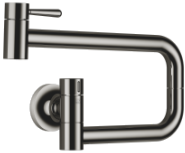





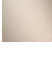
VAIA POT FILLER Cold-water valve - Dark Chrome

VAIA

30 805 809



- 500mm projection
- pivoting spout
- laminar flow
- cold water only
- max. flow 5.7 l/min at 3 bar flow pressure
- two valves
- min. recess depth 125 mm
- max. recess depth 80 mm
- lead-free
- This product can help a building meet the requirements of Green Building Rating Systems, e.g. LEED®, BREEAM®, DGNB

|  |                               |               |
|--|-------------------------------|---------------|
|   | Dark Chrome                   | 30 805 809-19 |
|   | Chrome                        | 30 805 809-00 |
|   | Brushed Platinum              | 30 805 809-06 |
|   | Platinum                      | 30 805 809-08 |
|   | Durabrass (23kt Gold)         | 30 805 809-09 |
|   | Brushed Durabrass (23kt Gold) | 30 805 809-28 |
|   | Brushed Champagne (22kt Gold) | 30 805 809-46 |
|   | Champagne (22kt Gold)         | 30 805 809-47 |
|   | Brushed Chrome                | 30 805 809-93 |
|  | Brushed Dark Platinum         | 30 805 809-99 |

Required miscellaneous



POT FILLER Concealed wall elbow 35 087 970-90  
- 0010

#### Flow rate chart



#### Codes & Standards

California Energy  
Commission  
(CEC)



## VAIA POT FILLER Cold-water valve - Dark Chrome

---

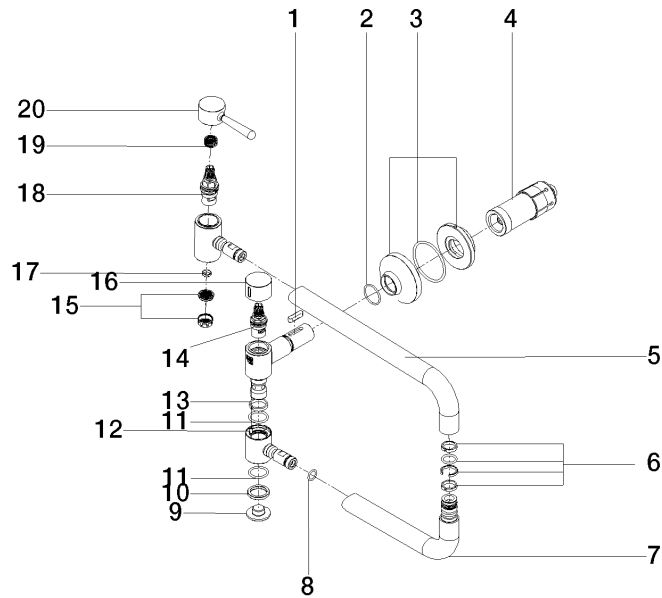
VAIA

30 805 809

### Certificates

---

LGA\_29748.





VAIA POT FILLER Cold-water valve - Dark Chrome

VAIA

30 805 809

Spare parts list

| No. | Item Number        | Name       | Quantity used | Delivery time |
|-----|--------------------|------------|---------------|---------------|
| 1   | 90 16 04 001 00 90 | spring     | 1             | 2             |
| 2   | 90 14 10 063 00 90 | seal       | 1             | 2             |
| 3   | 90 27 87 039 00-19 | rosette    | 1             | 20            |
| 4   | 90 30 01 213 00 90 | connection | 1             | 2             |
| 5   | 09 28 22 208-19    | pipe       | 1             | 60            |
| 6   | 90 28 10 199 00 90 | gasket kit | 1             | 10            |
| 7   | 04 28 22 221 10-19 | pipe       | 1             | 60            |
| 8   | 90 14 10 077 00 90 | seal       | 2             | 2             |
| 9   | 09 21 02 028-19    | lid        | 1             | 60            |
| 10  | 09 28 10 139 90    | ring       | 1             | 2             |
| 11  | 09 14 10 015 90    | seal       | 2             | 2             |
| 12  | 09 31 11 109 90    | pin        | 1             | 2             |
| 13  | 09 28 10 136 90    | ring       | 1             | 2             |
| 14  | 90 90 03 171 00 90 | top        | 1             | 2             |
| 15  | 09 29 03 089 90    | aerator    | 1             | 60            |
| 16  | 09 20 62 025-19    | handle     | 1             | 60            |
| 17  | 09 14 05 002 90    | seal       | 1             | 2             |
| 18  | 90 90 03 146 00 90 | top        | 1             | 2             |
| 19  | 90 12 12 232 00 90 | fixing cap | 1             | 2             |
| 20  | 90 20 80 051 00-19 | handle     | 1             | -             |

Spare part can no longer be ordered, please order the replacement item