

## TARA ULTRA POT FILLER Cold-water valve - Brushed Chrome

TARA ULTRA

30 805 875



- 500mm projection
- pivoting spout
- laminar flow
- cold water only
- max. flow 5.7 l/min at 3 bar flow pressure
- two valves
- min. recess depth 125 mm
- max. recess depth 80 mm
- lead-free
- This product can help a building meet the requirements of Green Building Rating Systems, e.g. LEED®, BREEAM®, DGNB

	Brushed Chrome	30 805 875-93
	Chrome	30 805 875-00
	Brushed Platinum	30 805 875-06
	Platinum	30 805 875-08
	Durabrass (23kt Gold)	30 805 875-09
	Dark Chrome	30 805 875-19
	Brushed Durabrass (23kt Gold)	30 805 875-28
	Brushed Champagne (22kt Gold)	30 805 875-46
	Champagne (22kt Gold)	30 805 875-47
	Brushed Dark Platinum	30 805 875-99

### Required miscellaneous

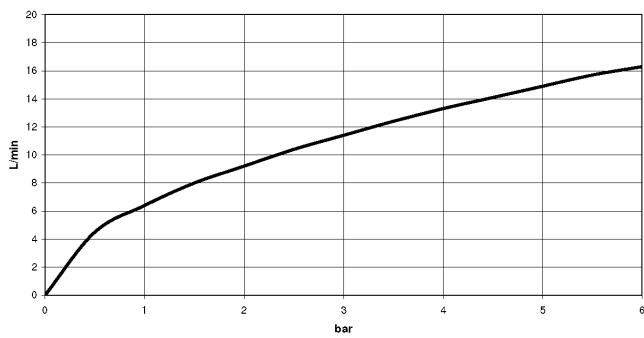


- POT FILLER Concealed wall elbow** 35 087 970-90  
- 0010
- max. recess depth 125 mm
  - min. recess depth 80 mm

30 805 875



**Flow rate chart**



**Codes & Standards**

ASME  
A112.18.1/CSA  
B125.1

California Energy  
Commission  
(CEC)

NSF/ANSI 372

NSF/ANSI/CAN  
61



## TARA ULTRA POT FILLER Cold-water valve - Brushed Chrome

TARA ULTRA

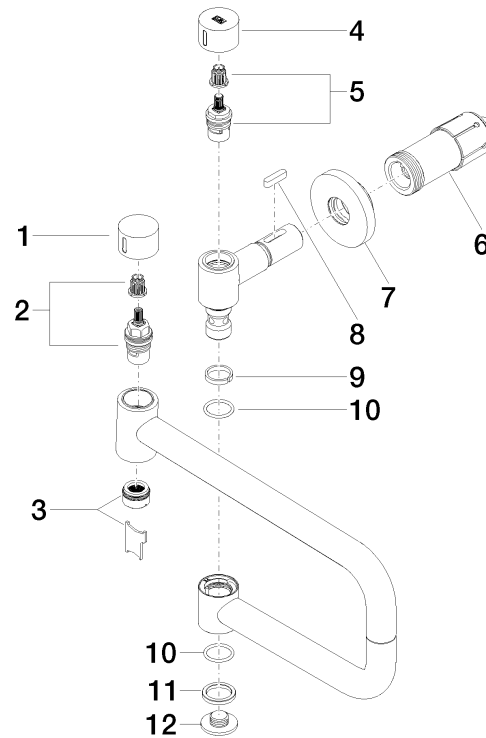
30 805 875

### Certificates

LGA\_29748.

IAPMO\_N-4976.

IAPMO\_6397.



## Spare parts list

No.	Item Number	Name	Quantity used	Delivery time
1	09 20 62 025-93	handle	1	60
2	90 90 03 146 00 90	top	1	2
3	90 23 01 026 11-93	aerator	1	20
4	09 20 62 027-93	handle	1	60
5	90 90 03 171 00 90	top	1	2
6	90 30 01 213 00 90	connection	1	2
7	90 27 87 039 00-93	rosette	1	20
8	90 16 04 001 00 90	spring	1	2
9	09 28 10 136 90	ring	1	2
10	09 14 10 015 90	seal	2	2
11	09 28 10 139 90	ring	1	2
12	09 21 02 028-93	lid	1	60