

LOT Two-hole mixer with individual rosettes - Champagne (22kt Gold)

LOT

32 800 680



- 235mm projection
- pivotable spout 360°
- air-enriched flow
- height of mixer 345 mm
- height up to aerator 319 mm
- individual rosette 55 x 55 mm
- hole diameter spout 35 mm
- single-lever mixer hole diameter 44 mm
- 2 x pressure hose with 3/8" cap nut
- max. flow 5.7 l/min at 3 bar flow pressure
- lead-free
- This product can help a building meet the requirements of Green Building Rating Systems, e.g. LEED®, BREEAM®, DGNB

Operating unit can be positioned freely.

| | | |
|--|--------------------------------|--------------------|
| | Champagne (22kt Gold) | 32 800 680-47 0010 |
| | Chrome | 32 800 680-00 0010 |
| | Brushed Platinum | 32 800 680-06 0010 |
| | Platinum | 32 800 680-08 0010 |
| | Dark Chrome | 32 800 680-19 0010 |
| | Brushed Durabronze (23kt Gold) | 32 800 680-28 0010 |
| | Brushed Champagne (22kt Gold) | 32 800 680-46 0010 |
| | Brushed Dark Platinum | 32 800 680-99 0010 |

Recommended miscellaneous

**Dispenser with rosette -
Champagne (22kt Gold)**

82 439 970-47



Recommended miscellaneous

**AIR SWITCH Control button -
Champagne (22kt Gold)**

10 714 970-47

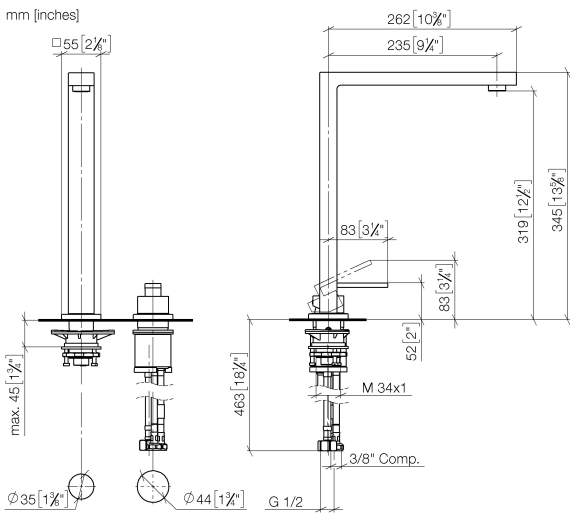




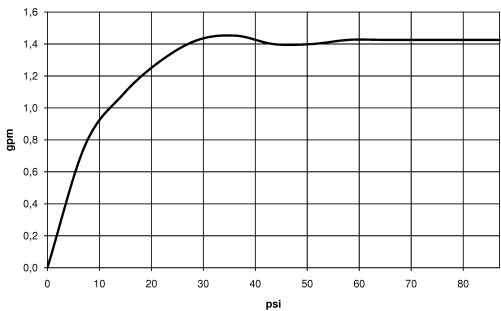
LOT Two-hole mixer with individual rosettes - Champagne (22kt Gold)

LOT

32 800 680



Flow rate chart



Codes & Standards

| | | | |
|--------------------|---------------------------------|--|--------------|
| ADA | ASME A112.18.1/CSA B125.1 | California Energy Commission (CEC) | NSF/ANSI 372 |
| NSF/ANSI/CAN 61 | NSF372 | NSF61 | |



LOT Two-hole mixer with individual rosettes - Champagne (22kt Gold)

LOT

32 800 680

Certificates

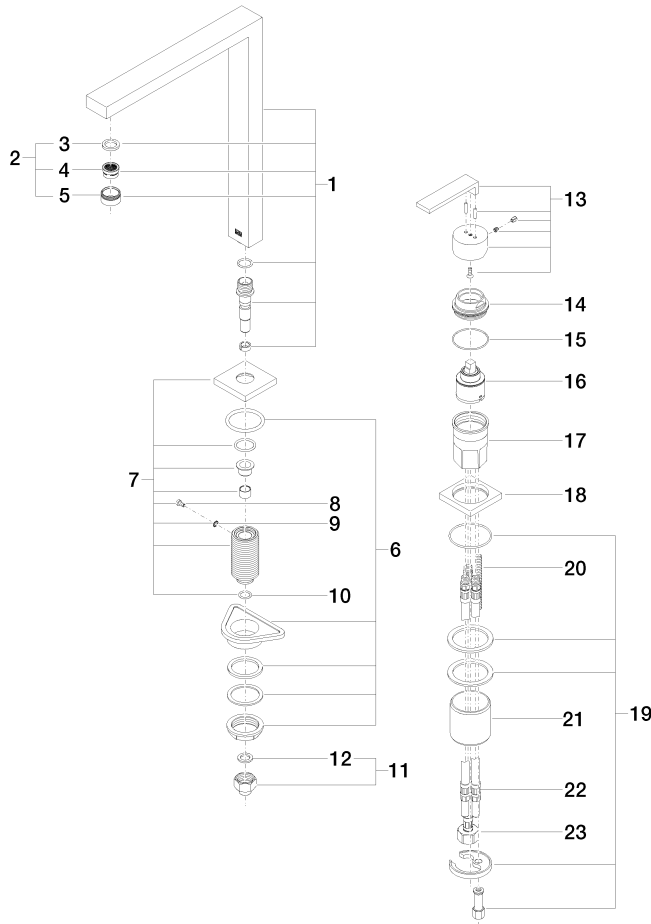
IAPMO_N-4

IAPMO_6

32 800 680

Product version from 6/1/2022

Parts for other
finishes can be found
here: [Chrome](#)





LOT Two-hole mixer with individual rosettes - Champagne (22kt Gold)

LOT

32 800 680

Spare parts list

Product version from 6/1/2022