






EDITION PRO Single-lever bath mixer for wall installation without shower set -  
Matte Black

33 200 626

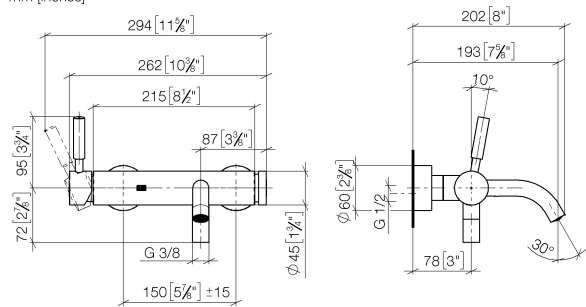


- circular normal flow
- automatic bath/shower diverter
- 3/8" shower outlet
- slide-on rosettes Ø 60 mm
- 1/2" connection
- gauge 150 mm - 15 mm
- max. flow 14 l/min at 3 bar flow pressure

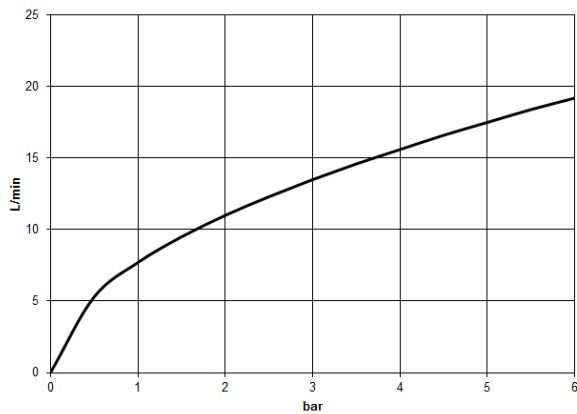
	Matte Black	33 200 626-33
	Chrome	33 200 626-00
	Brushed Chrome	33 200 626-93

**EDITION PRO Single-lever bath mixer for wall installation without shower set -  
Matte Black**

33 200 626  
mm [inches]



Flow rate chart



**Codes & Standards**

DIN 4109

ISO 3822

Ü-Zeichen



## EDITION PRO Single-lever bath mixer for wall installation without shower set - Matte Black

---

33 200 626

Certificates

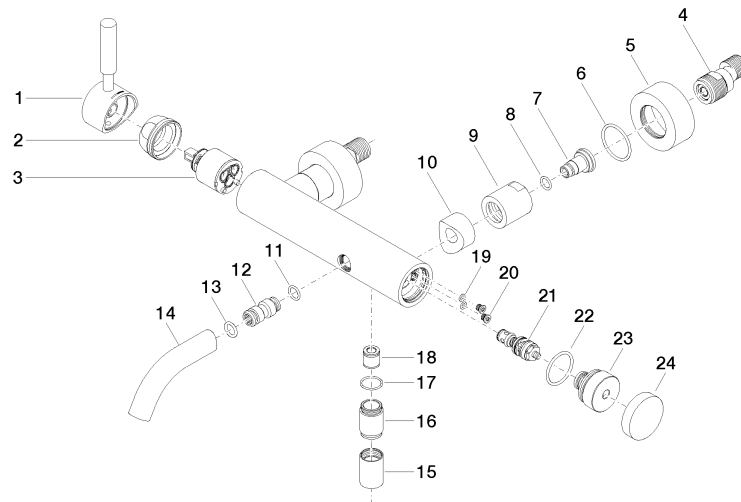
---

LGA\_29

## EDITION PRO Single-lever bath mixer for wall installation without shower set - Matte Black

33 200 626

Parts for other  
finishes can be found  
here: [Chrome](#)





## EDITION PRO Single-lever bath mixer for wall installation without shower set - Matte Black

33 200 626

### Spare parts list

No.	Item Number	Name	Quantity used	Delivery time
1	90 20 62 049 00-33	handle	1	30
2	09 24 04 107-33	nut	1	30
3	90 15 05 064 00 90	cartridge	1	2
4	04 11 04 030 00 90	connection	2	2
5	09 27 62 004-33	rosette	2	30
6	09 14 10 119 90	seal	2	2
7	09 29 05 005 20 90	nipple	2	60
8	09 14 10 008 90	seal	2	2
9	09 23 10 048-33	nut	2	30
10	09 18 40 059-33	sleeve	2	30
11	09 14 10 003 90	seal	2	2
12	09 24 04 043 90	nipple	1	2
14	90 11 06 213 00-33	spout	1	30
15	90 21 02 069 00-33	cover	1	30
16	09 24 03 115 20-33	nipple	1	30
17	90 14 10 032 00 90	seal	1	2
18	90 23 01 040 00 90	back-flow preventer	1	2
19	09 14 10 001 90	seal	2	2
20	09 30 30 113 20 90	screw	2	2
21	90 31 09 032 00-33	diverter	1	-
Spare part can no longer be ordered, please order the replacement item				
22	09 14 10 101 90	seal	1	2
23	09 21 10 035 20-33	nipple	1	30
24	09 20 62 031-33	handle	1	30