


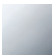
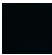


EDITION PRO Single-lever bath mixer for wall installation without shower set -
Brushed Chrome

33 200 626



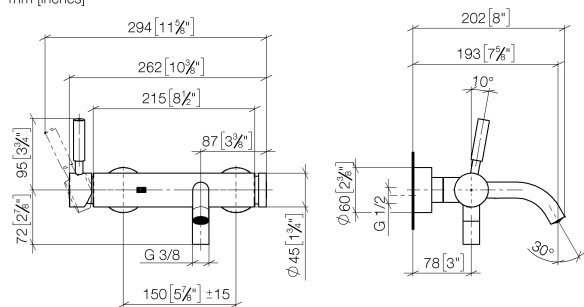
- circular normal flow
- automatic bath/shower diverter
- 3/8" shower outlet
- slide-on rosettes Ø 60 mm
- 1/2" connection
- gauge 150 mm - 15 mm
- max. flow 14 l/min at 3 bar flow pressure

	Brushed Chrome	33 200 626-93
	Chrome	33 200 626-00
	Matte Black	33 200 626-33

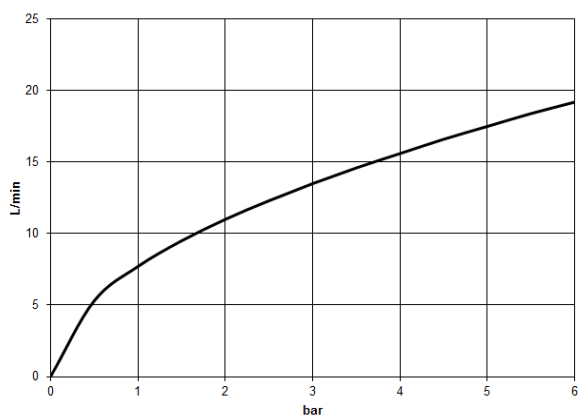
EDITION PRO Single-lever bath mixer for wall installation without shower set - Brushed Chrome

33 200 626

mm [inches]



Flow rate chart



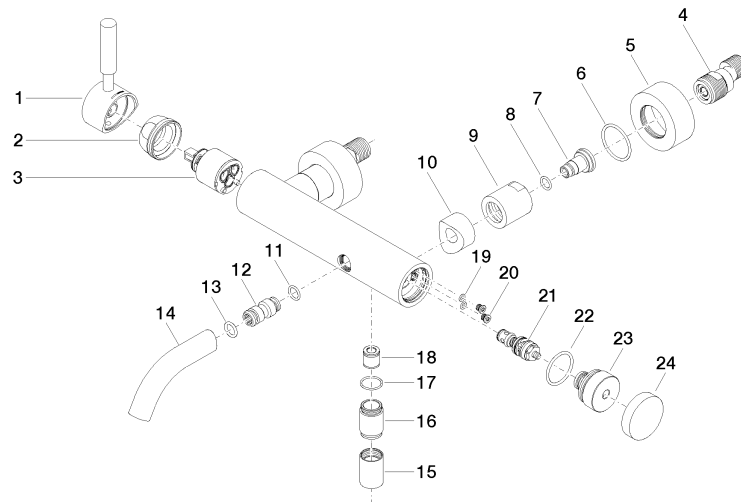
Certificates

LGA_29687.

EDITION PRO Single-lever bath mixer for wall installation without shower set - Brushed Chrome

33 200 626

Parts for other
finishes can be found
here: [Chrome](#)





EDITION PRO Single-lever bath mixer for wall installation without shower set - Brushed Chrome

33 200 626

Spare parts list

No.	Item Number	Name	Quantity used	Delivery time
1	90 20 62 049 00-93	handle	1	20
2	09 24 04 107-93	nut	1	20
3	90 15 05 064 00 90	cartridge	1	2
4	04 11 04 030 00 90	connection	2	2
5	09 27 62 004-93	rosette	2	20
6	09 14 10 119 90	seal	2	2
7	09 29 05 005 20 90	nipple	2	60
8	09 14 10 008 90	seal	2	2
9	09 23 10 048-93	nut	2	20
10	09 18 40 059-93	sleeve	2	20
11	09 14 10 003 90	seal	2	2
12	09 24 04 043 90	nipple	1	2
14	90 11 06 213 00-93	spout	1	20
15	90 21 02 069 00-93	cover	1	-
Spare part can no longer be ordered, please order the replacement item				
16	09 24 03 115 20-93	nipple	1	20
17	90 14 10 032 00 90	seal	1	2
18	90 23 01 040 00 90	back-flow preventer	1	2
19	09 14 10 001 90	seal	2	2
20	09 30 30 113 20 90	screw	2	2
21	90 31 09 032 00-93	diverter	1	20
22	09 14 10 101 90	seal	1	2
23	09 21 10 035 20-93	nipple	1	20
24	09 20 62 031-93	handle	1	20