

LISSÉ Single-lever bath mixer for wall mounting without shower set - Brushed Platinum

LISSÉ




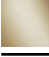



33 200 845



- 190-200mm projection
- circular normal flow
- automatic bath/shower diverter
- 3/8" shower outlet
- slide-on rosettes Ø 60 mm
- 1/2" connection
- gauge 150 mm - 15 mm
- max. flow 13.5 l/min at 3 bar flow pressure
- WRAS 2311042

Intrinsic protection against back flow.

Note: Local building codes may require the use of an anti-scald device. Please refer to remote pressure balance valve (35 910 970 90)

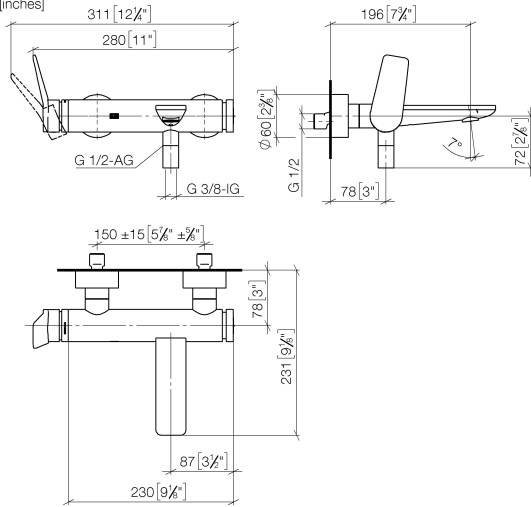
	Brushed Platinum	33 200 845-06
	Chrome	33 200 845-00
	Dark Chrome	33 200 845-19
	Brushed Light Gold	33 200 845-27
	Matte Black	33 200 845-33
	Brushed Chrome	33 200 845-93
	Brushed Dark Platinum	33 200 845-99

LISSE Single-lever bath mixer for wall mounting without shower set - Brushed Platinum

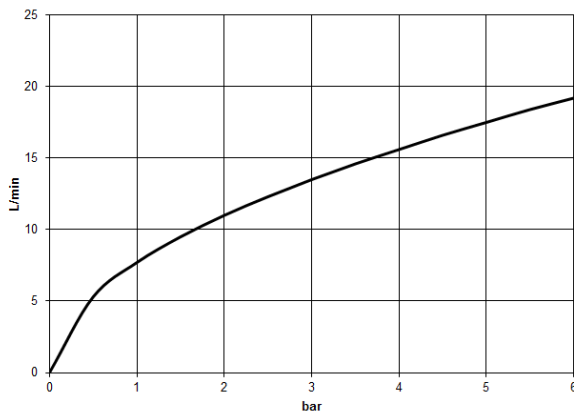
LISSE

33 200 845

mm [inches]



Flow rate chart



Codes & Standards

ASME A112.18.1	California Energy Commission (CEC)	cUPC	DIN 4109
ISO 3822	Scottish Water Byelaws	UK Water Supply Regulations	Ü-Zeichen



LISSE Single-lever bath mixer for wall mounting without shower set - Brushed Platinum

LISSE

33 200 845

Certificates

WRAS_2311

LGA_9

IAPMO_4976

LISSÉ Single-lever bath mixer for wall mounting without shower set - Brushed Platinum

LISSÉ

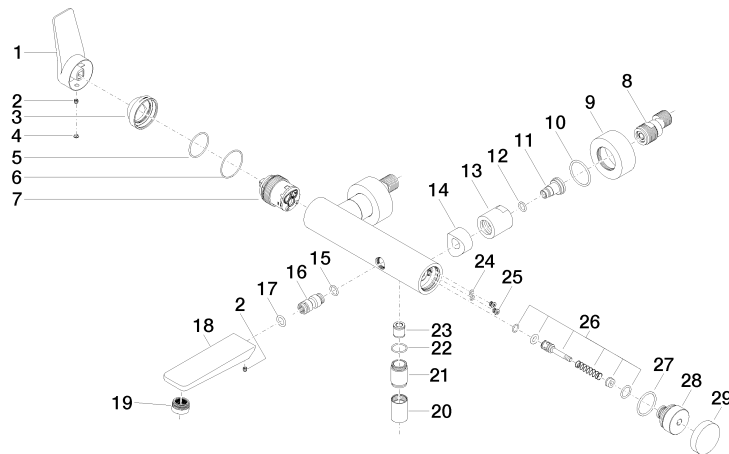
33 200 845

Product version from 3/9/2016 to 7/16/2018

Product version from 7/16/2018

Product version from 4/1/2024

Parts for other
finishes can be found
here: [Chrome](#)





LISSÉ Single-lever bath mixer for wall mounting without shower set - Brushed Platinum

LISSÉ

33 200 845

Spare parts list

Product version from 3/9/2016 to 7/16/2018

Product version from 7/16/2018

Product version from 4/1/2024

No.	Item Number	Name	Quantity used	Delivery time
	09 20 84 021-06	handle	36	10