

## LISSÉ Single-lever bath mixer for wall mounting without shower set - Dark Chrome

LISSÉ








33 200 845



- 190-200mm projection
- circular normal flow
- automatic bath/shower diverter
- 3/8" shower outlet
- slide-on rosettes Ø 60 mm
- 1/2" connection
- gauge 150 mm - 15 mm
- max. flow 13.5 l/min at 3 bar flow pressure
- WRAS 2311042

Intrinsic protection against back flow.

Note: Local building codes may require the use of an anti-scald device. Please refer to remote pressure balance valve (35 910 970 90)

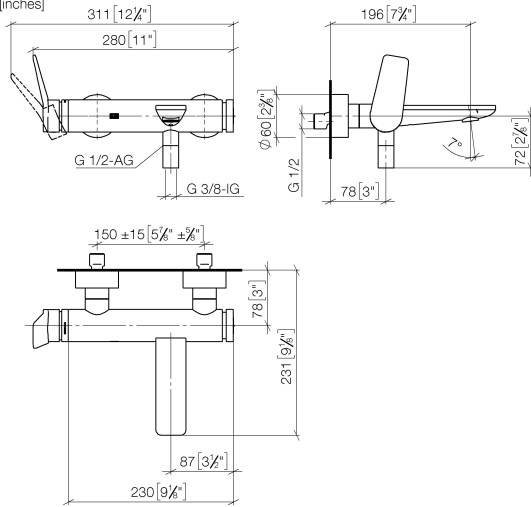
|  |                       |               |
|--|-----------------------|---------------|
|  | Dark Chrome           | 33 200 845-19 |
|  | Chrome                | 33 200 845-00 |
|  | Brushed Platinum      | 33 200 845-06 |
|  | Brushed Light Gold    | 33 200 845-27 |
|  | Matte Black           | 33 200 845-33 |
|  | Brushed Chrome        | 33 200 845-93 |
|  | Brushed Dark Platinum | 33 200 845-99 |

## LISSE Single-lever bath mixer for wall mounting without shower set - Dark Chrome

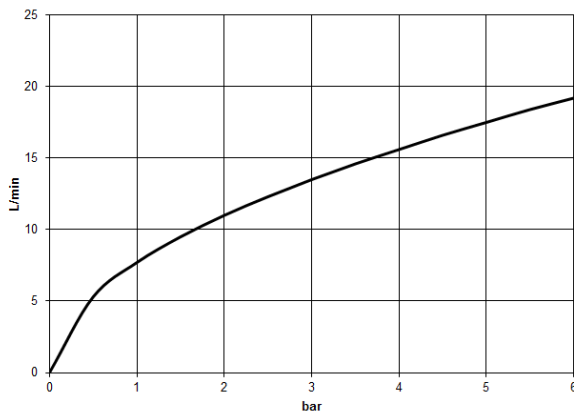
LISSE

33 200 845

mm [inches]



### Flow rate chart



### Codes & Standards

California Energy  
Commission  
(CEC)

DIN 4109

ISO 3822

Scottish Water  
Byelaws

UK Water Supply  
Regulations

Ü-Zeichen



## LISSE Single-lever bath mixer for wall mounting without shower set - Dark Chrome

---

LISSE

33 200 845

Certificates

---

WRAS\_2311

LGA\_9

# LISSÉ Single-lever bath mixer for wall mounting without shower set - Dark Chrome

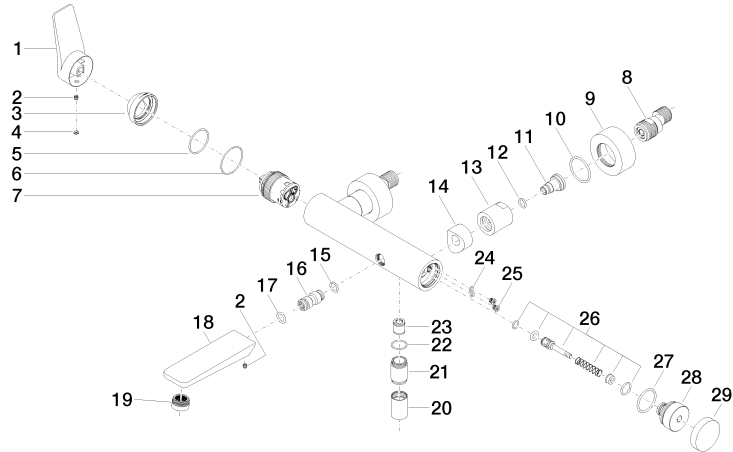
LISSÉ

33 200 845

Product version from 7/16/2018

**Product version from 4/1/2024**

Parts for other  
finishes can be found  
here: [Chrome](#)





## LISSÉ Single-lever bath mixer for wall mounting without shower set - Dark Chrome

LISSÉ

33 200 845

### Spare parts list

Product version from 7/16/2018

### Product version from 4/1/2024

| No. | Item Number     | Name   | Quantity used | Delivery time |
|-----|-----------------|--------|---------------|---------------|
|     | 09 20 84 021-19 | handle | 36            | 60            |