

## CYO Single-lever basin mixer with pop-up waste - Brushed Platinum

CYO






33 500 811



- 143mm projection
- 1 1/4" pop-up waste
- fixed spout
- rectangular, air-enriched flow
- height of mixer 180 mm
- height up to aerator 128 mm
- hole diameter 35 mm
- max. flow 4.5 l/min
- 2 x pressure hose with 3/8" cap nut
- lead-free
- This product can help a building meet the requirements of Green Building Rating Systems, e.g. LEED®, BREEAM®, DGNB

Only suitable for basins with an overflow.

Distance from centre of tap hole to wall min. 55 mm  
or to front edge of basin min. 40 mm.

|  |                                   |                    |
|--|-----------------------------------|--------------------|
|  | Brushed Platinum                  | 33 500 811-06 0010 |
|  | Chrome                            | 33 500 811-00 0010 |
|  | Dark Chrome                       | 33 500 811-19 0010 |
|  | Brushed Durabronze<br>(23kt Gold) | 33 500 811-28 0010 |
|  | Brushed Dark<br>Platinum          | 33 500 811-99 0010 |





## CYO Single-lever basin mixer with pop-up waste - Brushed Platinum

CYO

33 500 811

### Certificates

IAPMO\_4976

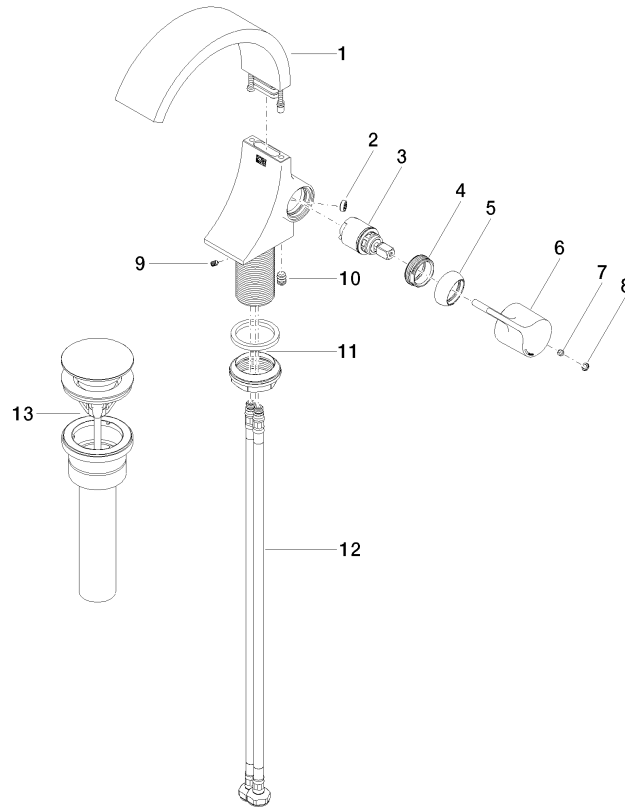
IAPMO\_8834

IAPMO\_6397

IAPMO\_N-4976

33 500 811

Parts for other  
finishes can be found  
here: [Chrome](#)





CYO Single-lever basin mixer with pop-up waste - Brushed Platinum

CYO

33 500 811

Spare parts list

| No. | Item Number        | Name  | Quantity used | Delivery time |
|-----|--------------------|-------|---------------|---------------|
|     | 90 11 70 012 01-06 | spout | 14            | 10            |