

## META Single-lever basin mixer with pop-up waste - Brushed Chrome


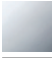
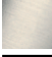
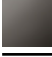

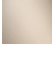

META

33 501 660

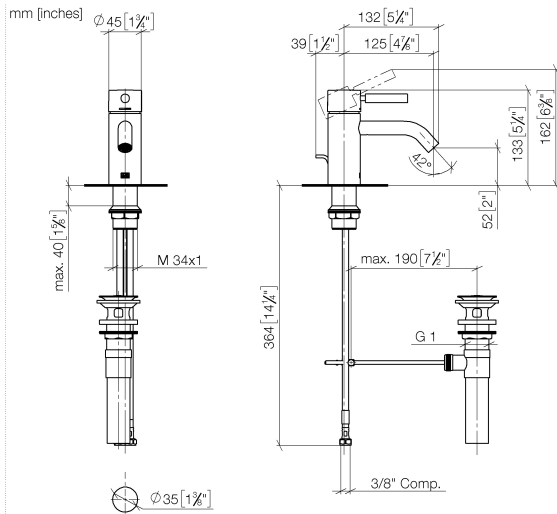


- 125mm projection
- 1 1/4" pop-up waste
- fixed spout
- circular, air-enriched flow
- height of mixer 133 mm
- height up to aerator 52 mm
- hole diameter 35 mm
- 2x screw-in M 8 x 1 pressure hose, leak-tested
- 2 x pressure hose with 3/8" cap nut
- max. flow 4.5 l/min
- lead-free
- This product can help a building meet the requirements of Green Building Rating Systems, e.g. LEED®, BREEAM®, DGNB

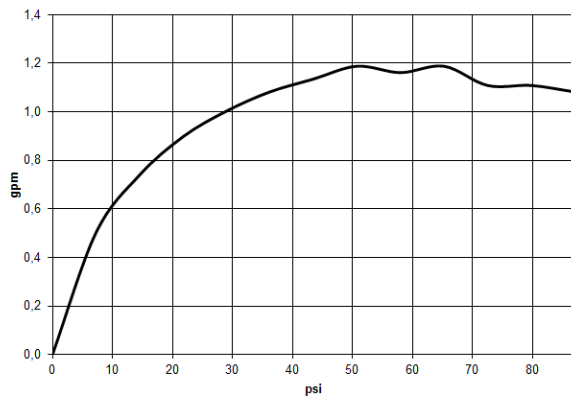
Only suitable for basins with an overflow.

|                                                                                   |                               |                    |
|-----------------------------------------------------------------------------------|-------------------------------|--------------------|
|  | Brushed Chrome                | 33 501 660-93 0010 |
|  | Chrome                        | 33 501 660-00 0010 |
|  | Brushed Platinum              | 33 501 660-06 0010 |
|  | Dark Chrome                   | 33 501 660-19 0010 |
|  | Matte Black                   | 33 501 660-33 0010 |
|  | Brushed Champagne (22kt Gold) | 33 501 660-46 0010 |
|  | Champagne (22kt Gold)         | 33 501 660-47 0010 |

33 501 660



**Flow rate chart**



**Codes & Standards**

ADA

ASME  
A112.18.1/CSA  
B125.1

California Energy  
Commission  
(CEC)

NSF/ANSI 372

NSF/ANSI/CAN  
61

Water Sense





## META Single-lever basin mixer with pop-up waste - Brushed Chrome

---

META

33 501 660

### Certificates

---

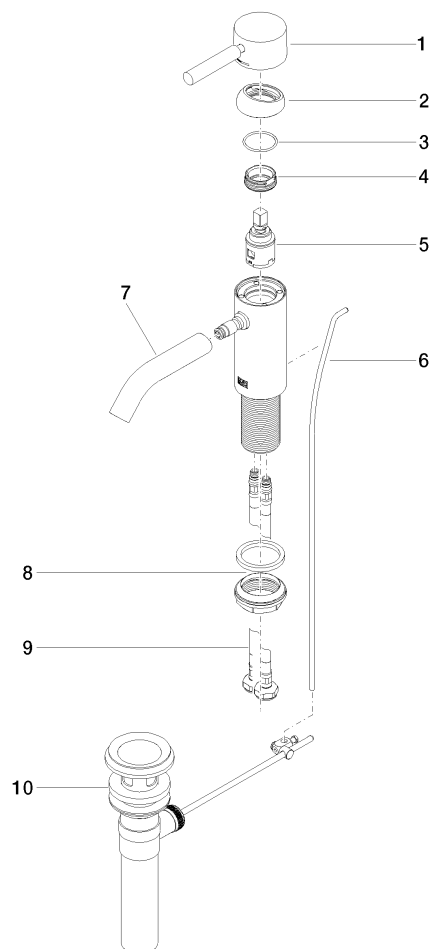
IAPMO\_8834 (1).    IAPMO\_4976 (2).    IAPMO\_N-4976 (1).    IAPMO\_6397 (1).

## META Single-lever basin mixer with pop-up waste - Brushed Chrome

META

33 501 660

Parts for other  
finishes can be found  
here: [Chrome](#)



### Spare parts list

| No. | Item Number        | Name                      | Quantity used | Delivery time |
|-----|--------------------|---------------------------|---------------|---------------|
| 1   | 90 20 66 002 00-93 | handle                    | 1             | 20            |
| 2   | 09 28 30 041-93    | cover                     | 1             | 20            |
| 3   | 09 14 10 091 90    | seal                      | 1             | 2             |
| 4   | 09 24 04 266 90    | nut                       | 1             | 2             |
| 5   | 90 15 05 042 00 90 | cartridge                 | 1             | 2             |
| 6   | 09 31 09 110-93    | pull-rod                  | 1             | 20            |
| 7   | 90 11 06 206 01-93 | spout                     | 1             | 20            |
| 8   | 04 23 10 044 07 90 | fixing set                | 1             | 2             |
| 9   | 04 30 04 102 00 90 | High pressure hose 3/8" - | 2             | 2             |
| 10  | 90 11 01 023 00-93 | pop-up waste              | 1             | 20            |