

CYO Single-lever basin mixer with pop-up waste - Brushed Dark Platinum

CYO






33 505 811



- 177mm projection
- 1 1/4" pop-up waste
- fixed spout
- rectangular, air-enriched flow
- height of mixer 198 mm
- height up to aerator 133 mm
- hole diameter 35 mm
- max. flow 4.5 l/min
- 2 x pressure hose with 3/8" cap nut
- lead-free
- This product can help a building meet the requirements of Green Building Rating Systems, e.g. LEED®, BREEAM®, DGNB

Only suitable for basins with an overflow.

Distance from centre of tap hole to wall min. 55 mm
or to front edge of basin min. 40 mm.

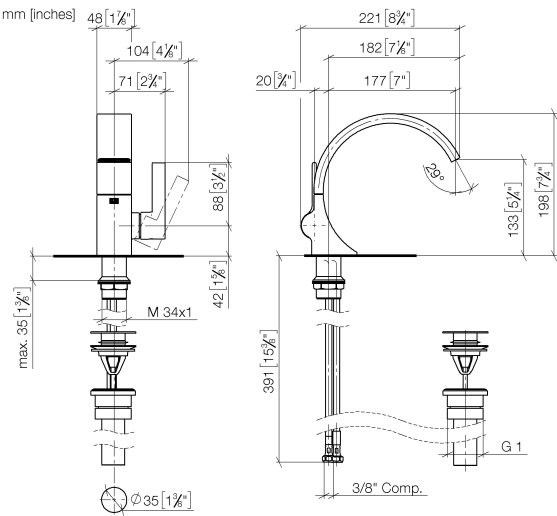
	Brushed Dark Platinum	33 505 811-99 0010
	Chrome	33 505 811-00 0010
	Brushed Platinum	33 505 811-06 0010
	Dark Chrome	33 505 811-19 0010
	Brushed Durabronze (23kt Gold)	33 505 811-28 0010



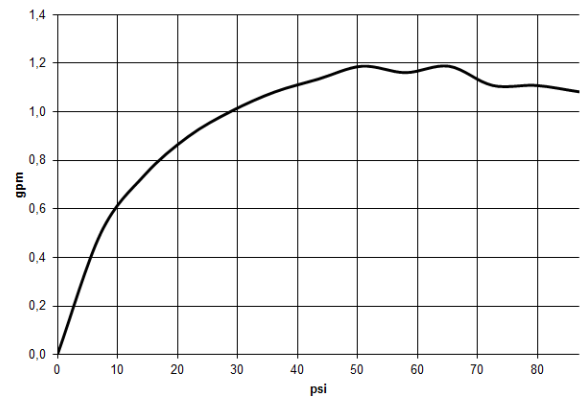
CYO Single-lever basin mixer with pop-up waste - Brushed Dark Platinum

CYO

33 505 811



Flow rate chart



Codes & Standards

ASME A112.18.1	California Energy Commission (CEC)	cUPC	EPA WaterSense
NSF372	NSF61	Water Sense	WaterSense





CYO Single-lever basin mixer with pop-up waste - Brushed Dark Platinum

CYO

33 505 811

Certificates

IAPMO_4976

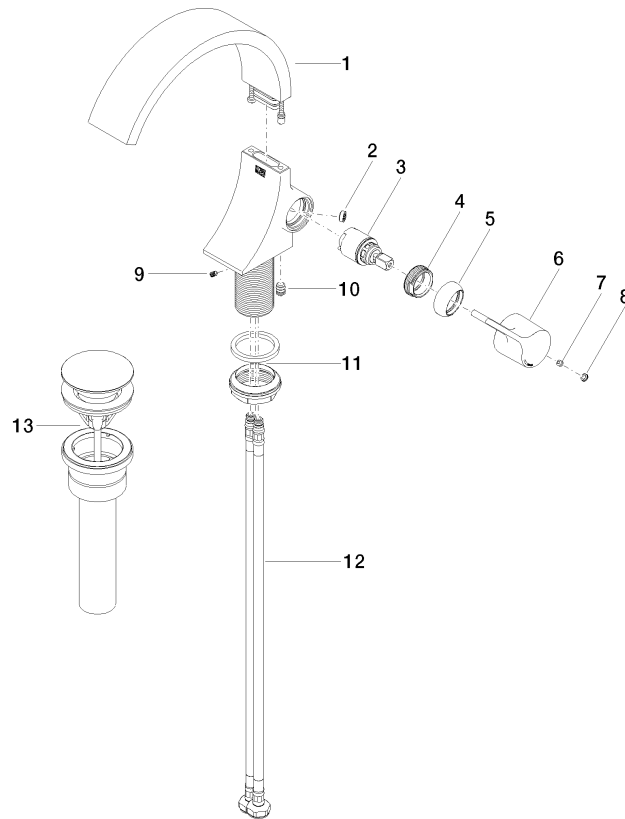
IAPMO_8834

IAPMO_6397

IAPMO_N-4976

33 505 811

Parts for other
finishes can be found
here: [Chrome](#)





CYO Single-lever basin mixer with pop-up waste - Brushed Dark Platinum

CYO

33 505 811

Spare parts list

No.	Item Number	Name	Quantity used	Delivery time
	90 11 70 013 01-99	spout	14	30