

## IMO Single-lever basin mixer with pop-up waste - Brushed Chrome




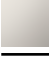


IMO

33 507 670

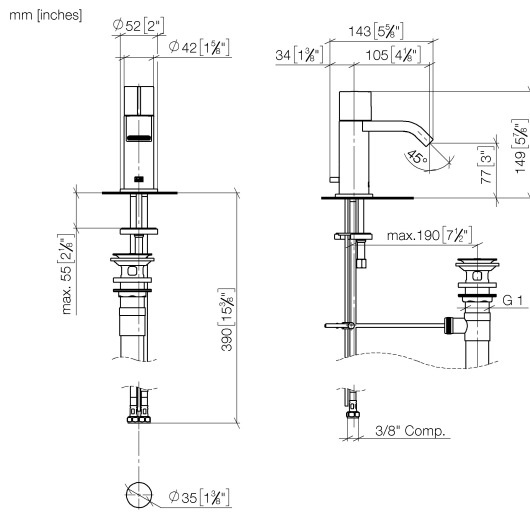


- 105mm projection
- 1 1/4" pop-up waste
- fixed spout
- rectangular, air-enriched flow
- height of mixer 149 mm
- height up to aerator 80 mm
- hole diameter 35 mm
- rosette Ø 52 mm optional
- progressive cartridge
- 2 x pressure hose with 3/8" cap nut
- max. flow 4.5 l/min
- lead-free
- This product can help a building meet the requirements of Green Building Rating Systems, e.g. LEED®, BREEAM®, DGNB

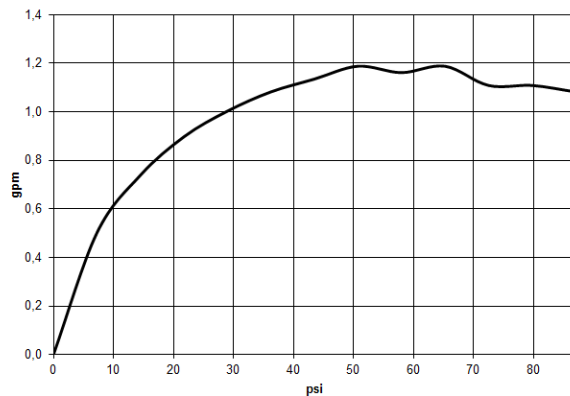
Only suitable for basins with an overflow.

	Brushed Chrome	33 507 670-93 0010
	Chrome	33 507 670-00 0010
	Brushed Platinum	33 507 670-06 0010
	Platinum	33 507 670-08 0010
	Brushed Durabronze (23kt Gold)	33 507 670-28 0010
	Brushed Dark Platinum	33 507 670-99 0010


33 507 670



Flow rate chart



Codes & Standards

ASME A112.18.1	ASME A112.18.1/CSA B125.1	California Energy Commission (CEC)	cUPC
EPA WaterSense	NSF/ANSI 372	NSF/ANSI/CAN 61	NSF372
NSF61	Water Sense	WaterSense	



## IMO Single-lever basin mixer with pop-up waste - Brushed Chrome

IMO

33 507 670

### Certificates

IAPMO\_4976

IAPMO\_8834

IAPMO\_6397

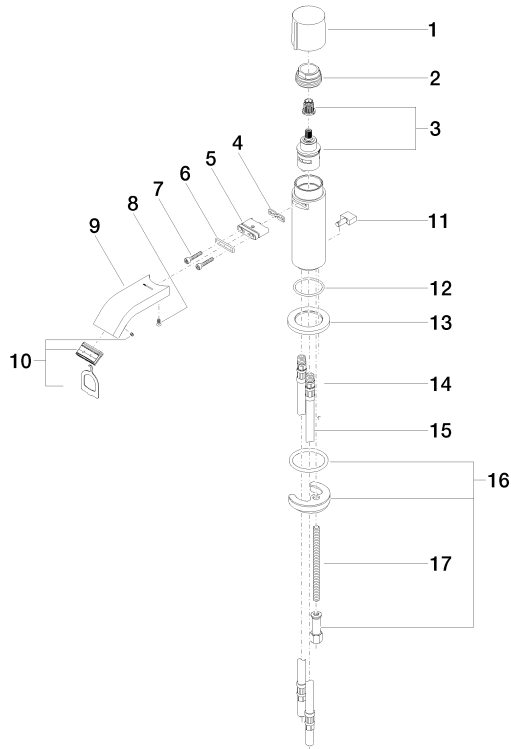
IAPMO\_N-4976

33 507 670

Product version up to 5/10/2021

**Product version from 5/10/2021**

Parts for other  
finishes can be found  
here: [Chrome](#)



18 ———— Revised for 04.11.01.023.00-0



## IMO Single-lever basin mixer with pop-up waste - Brushed Chrome

IMO

33 507 670

### Spare parts list

Product version up to 5/10/2021

#### Product version from 5/10/2021

No.	Item Number	Name	Quantity used	Delivery time
	09 20 67 001-93	handle	20	20