

MEM Single-lever mixer - Champagne (22kt Gold)

MEM

33 800 682



- 201mm projection
- pivotable spout 360°
- Optional swivel limiter available with swivel limiter set 12 820 970 90
- air-enriched flow
- height of mixer 340 mm
- height up to aerator 218 mm
- hole diameter 35 mm
- 2 x pressure hose with 3/8" cap nut
- max. flow 5.7 l/min at 3 bar flow pressure
- lead-free
- This product can help a building meet the requirements of Green Building Rating Systems, e.g. LEED®, BREEAM®, DGNB

Not possible in combination with rinsing spray.

| | | |
|--|-------------------------------|--------------------|
| | Champagne (22kt Gold) | 33 800 682-47 0010 |
| | Chrome | 33 800 682-00 0010 |
| | Brushed Platinum | 33 800 682-06 0010 |
| | Platinum | 33 800 682-08 0010 |
| | Durabrand (23kt Gold) | 33 800 682-09 0010 |
| | Dark Chrome | 33 800 682-19 0010 |
| | Brushed Durabrand (23kt Gold) | 33 800 682-28 0010 |
| | Matte Black | 33 800 682-33 0010 |
| | Brushed Champagne (22kt Gold) | 33 800 682-46 0010 |
| | Brushed Chrome | 33 800 682-93 0010 |
| | Brushed Dark Platinum | 33 800 682-99 0010 |

Recommended miscellaneous

Swivel limitation set -

12 820 970 90



Recommended miscellaneous

AIR SWITCH Control button -
Champagne (22kt Gold)

10 713 970-47



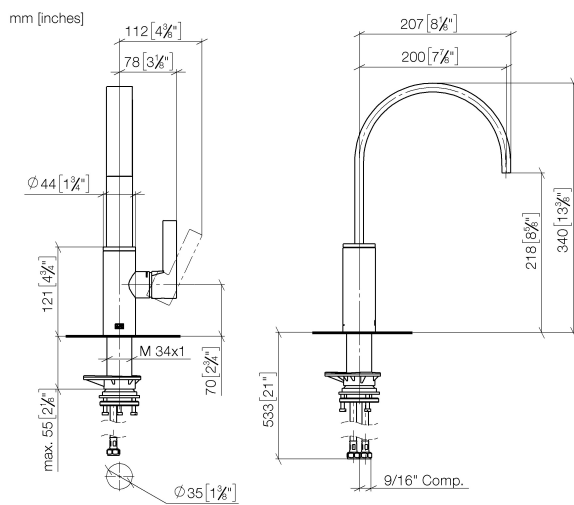
Recommended miscellaneous

Dispenser without rosette -
Champagne (22kt Gold)

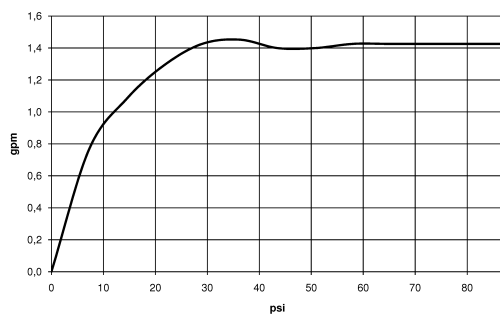
82 424 970-47



33 800 682



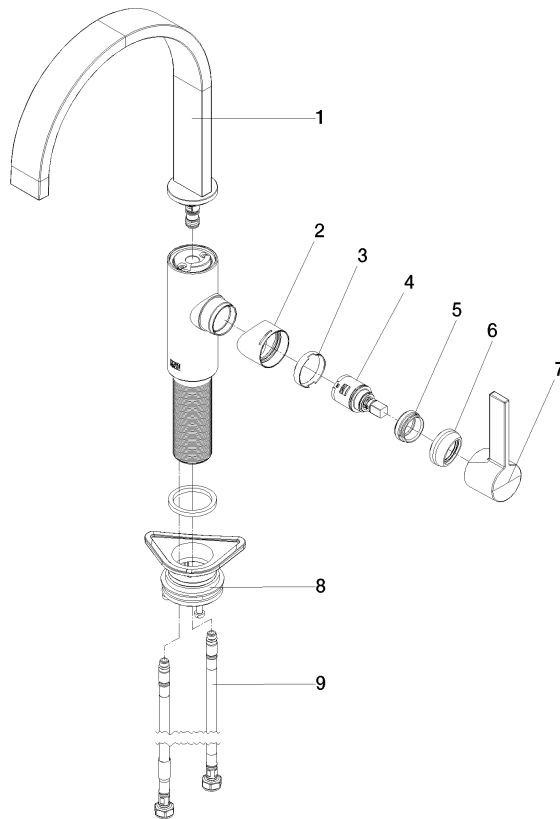
Flow rate chart



Codes & Standards

California Energy
Commission
(CEC)

33 800 682



Spare parts list

| No. | Item Number | Name | Quantity used | Delivery time |
|--|--------------------|------------|---------------|---------------|
| 1 | 90 28 22 332 01-47 | spout | 1 | - |
| Spare part can no longer be ordered, please order the replacement item | | | | |
| 2 | 09 19 86 012-47 | cover | 1 | 60 |
| 3 | 90 23 10 128 00 90 | nut | 1 | 2 |
| 4 | 90 15 05 042 00 90 | cartridge | 1 | 2 |
| 5 | 09 24 04 266 90 | nut | 1 | 2 |
| 6 | 90 28 30 052 00-47 | cover | 1 | 30 |
| 7 | 90 20 86 004 00-47 | handle | 1 | 30 |
| 8 | 04 23 10 044 08 90 | fixing set | 1 | 2 |
| 9 | 04 30 04 103 00 90 | hose | 2 | 2 |