

## TARA BAR TAP Single-lever mixer - Brushed Bronze

TARA

33 805 888



- 166mm projection
- pivotable spout 360°
- air-enriched flow
- height of mixer 302 mm
- height up to aerator 185 mm
- hole diameter 35 mm
- 2 x pressure hose with 3/8" cap nut
- max. flow 5.7 l/min at 3 bar flow pressure
- lead-free
- This product can help a building meet the requirements of Green Building Rating Systems, e.g. LEED®, BREEAM®, DGNB

Not possible in combination with rinsing spray.

	Brushed Bronze	33 805 888-42 0010
	Chrome	33 805 888-00 0010
	Brushed Platinum	33 805 888-06 0010
	Platinum	33 805 888-08 0010
	Durabronze (23kt Gold)	33 805 888-09 0010
	Dark Chrome	33 805 888-19 0010
	Brushed Durabronze (23kt Gold)	33 805 888-28 0010
	Matte Black	33 805 888-33 0010
	Brushed Champagne (22kt Gold)	33 805 888-46 0010
	Champagne (22kt Gold)	33 805 888-47 0010
	Brushed Chrome	33 805 888-93 0010
	Brushed Dark Platinum	33 805 888-99 0010

### Recommended miscellaneous

**AIR SWITCH Control button -  
Brushed Bronze**

10 713 970-42



### Recommended miscellaneous

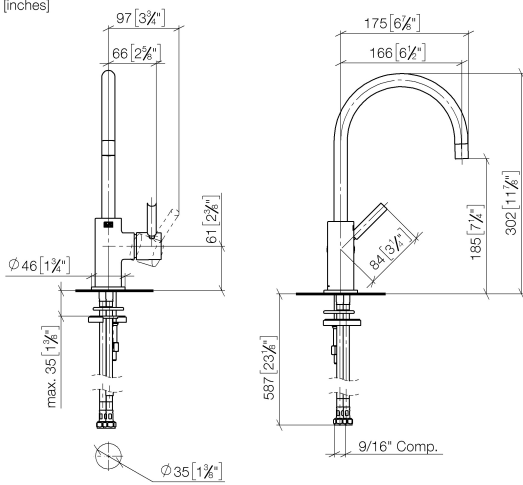
**Dispenser with rosette - Brushed  
Bronze**

82 444 970-42

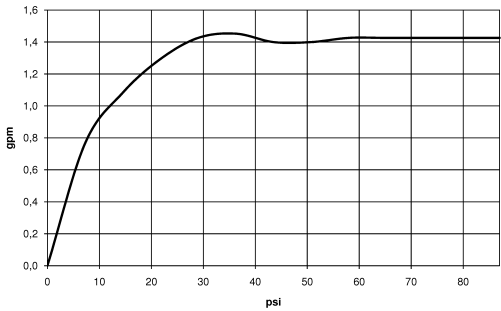


33 805 888

mm [inches]



Flow rate chart



Codes & Standards

California Energy  
Commission  
(CEC)

NSF372



## TARA BAR TAP Single-lever mixer - Brushed Bronze

---

TARA

33 805 888

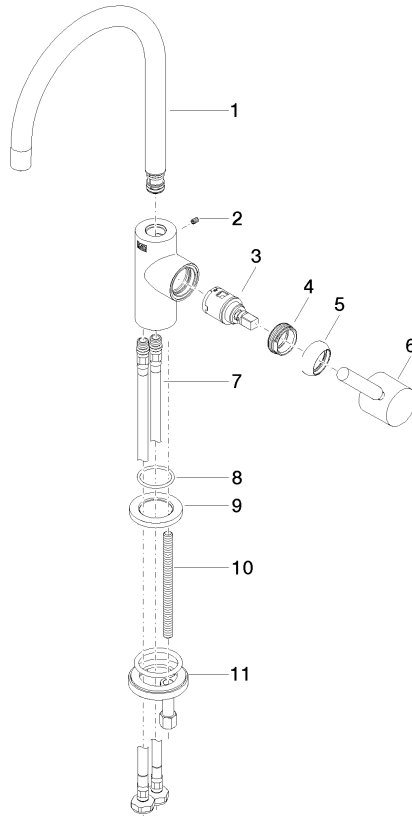
### Certificates

---

IAPMO\_6397

33 805 888

Parts for other  
finishes can be found  
here: [Chrome](#)





## TARA BAR TAP Single-lever mixer - Brushed Bronze

TARA

33 805 888

### Spare parts list