

## TARA Single-lever mixer - Brushed Champagne (22kt Gold)

TARA

33 815 888



- 236mm projection
- pivotable spout 360°
- air-enriched flow
- height of mixer 400 mm
- height up to aerator 230 mm
- hole diameter 35 mm
- 2 x pressure hose with 3/8" cap nut
- max. flow 5.7 l/min at 3 bar flow pressure
- lead-free
- This product can help a building meet the requirements of Green Building Rating Systems, e.g. LEED®, BREEAM®, DGNB

Not possible in combination with rinsing spray.

	Brushed Champagne (22kt Gold)	33 815 888-46 0010
	Chrome	33 815 888-00 0010
	Brushed Platinum	33 815 888-06 0010
	Platinum	33 815 888-08 0010
	Durabrand (23kt Gold)	33 815 888-09 0010
	Dark Chrome	33 815 888-19 0010
	Brushed Durabrand (23kt Gold)	33 815 888-28 0010
	Matte Black	33 815 888-33 0010
	Champagne (22kt Gold)	33 815 888-47 0010
	Brushed Chrome	33 815 888-93 0010
	Brushed Dark Platinum	33 815 888-99 0010

### Recommended miscellaneous

**Dispenser with rosette - Brushed Champagne (22kt Gold)** 82 444 970-46



### Recommended miscellaneous

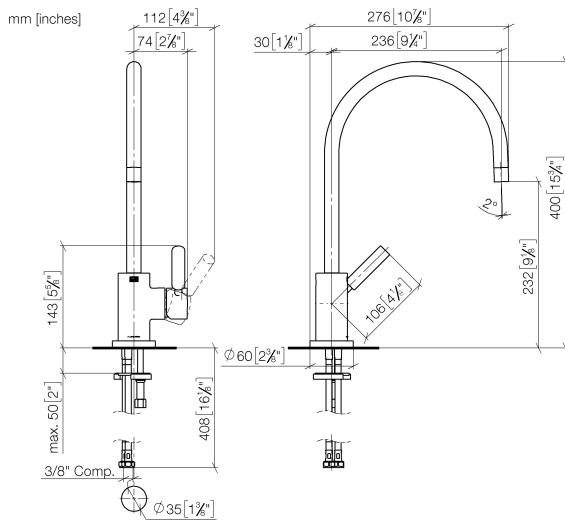
**AIR SWITCH Control button - Brushed Champagne (22kt Gold)** 10 713 970-46



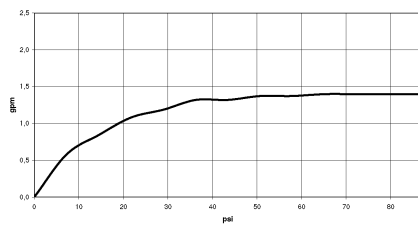
TARA Single-lever mixer - Brushed Champagne (22kt Gold)

TARA

33 815 888



### Flow rate chart



## Codes & Standards

ADA	ASME A112.18.1/CSA B125.1	California Energy Commission (CEC)	NSF/ANSI 372
NSF/ANSI/CAN 61	NSF372	NSF61	



## TARA Single-lever mixer - Brushed Champagne (22kt Gold)

---

TARA

33 815 888

### Certificates

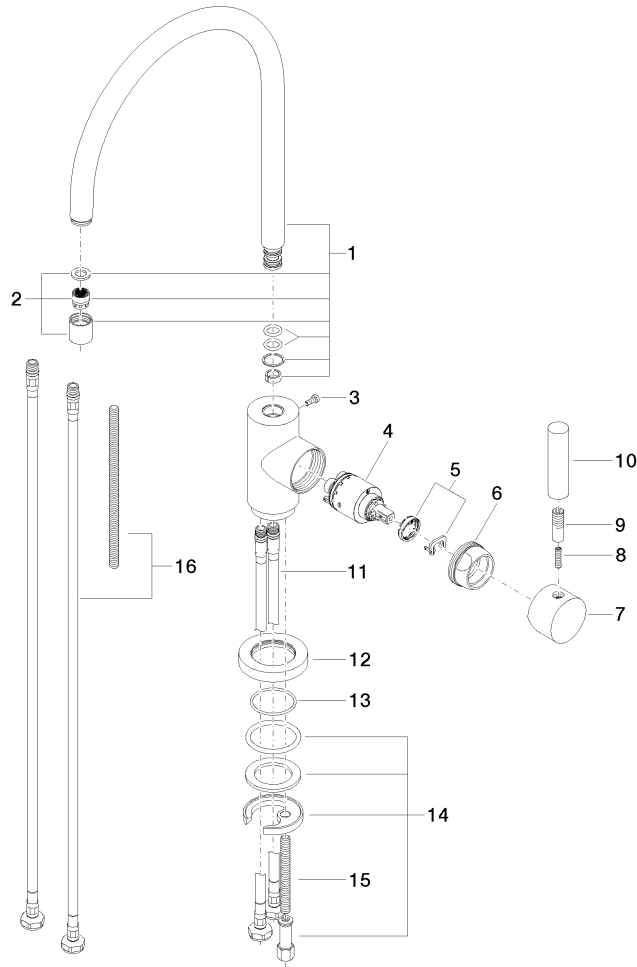
---

IAPMO\_6397

IAPMO\_N-4976

**Product version from 9/7/2021**

Parts for other  
finishes can be found  
here: [Chrome](#)





## TARA Single-lever mixer - Brushed Champagne (22kt Gold)

TARA

33 815 888

### Spare parts list

#### Product version from 9/7/2021

No.	Item Number	Name	Quantity used	Delivery time
	90 28 22 049 03-46	spout	17	30