

## TARA ULTRA Single-lever mixer for rinsing/Profi spray - Brushed Chrome

TARA ULTRA

33 826 875



- 241mm projection
- pivotable spout 360°
- air-enriched flow
- height of mixer 393 mm
- height up to aerator 240 mm
- single-lever mixer hole diameter 35mm
- 2x US pressure hose, 3/8"
- max. flow 5.7 l/min at 3 bar flow pressure
- lead-free
- This product can help a building meet the requirements of Green Building Rating Systems, e.g. LEED®, BREEAM®, DGNB

Single-lever mixer for combining with rinsing/Profi spray only

	Brushed Chrome	33 826 875-93 0010
	Chrome	33 826 875-00 0010
	Brushed Platinum	33 826 875-06 0010
	Platinum	33 826 875-08 0010
	Durabrand (23kt Gold)	33 826 875-09 0010
	Dark Chrome	33 826 875-19 0010
	Brushed Durabrand (23kt Gold)	33 826 875-28 0010
	Matte Black	33 826 875-33 0010
	Brushed Champagne (22kt Gold)	33 826 875-46 0010
	Champagne (22kt Gold)	33 826 875-47 0010
	Brushed Dark Platinum	33 826 875-99 0010

### Required miscellaneous



**Profi spray set - Brushed Chrome** 27 789 970-93 0010

### Required miscellaneous



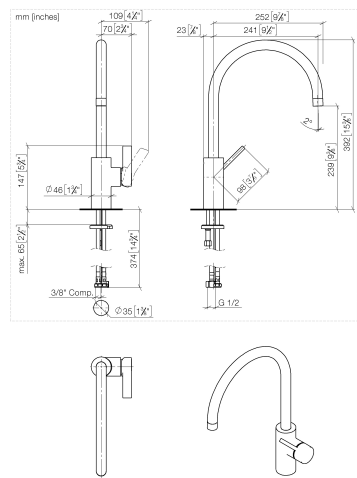
**Rinsing spray set - Brushed Chrome** 27 721 970-93



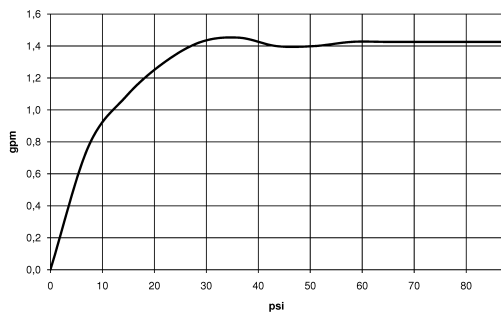
TARA ULTRA Single-lever mixer for rinsing/Profi spray - Brushed Chrome

TARA ULTRA

33 826 875



Flow rate chart



Codes & Standards

ADA

ASME  
A112.18.1/CSA  
B125.1

California Energy  
Commission  
(CEC)

NSF/ANSI 372

NSF/ANSI/CAN  
61



## TARA ULTRA Single-lever mixer for rinsing/Profi spray - Brushed Chrome

---

TARA ULTRA

33 826 875

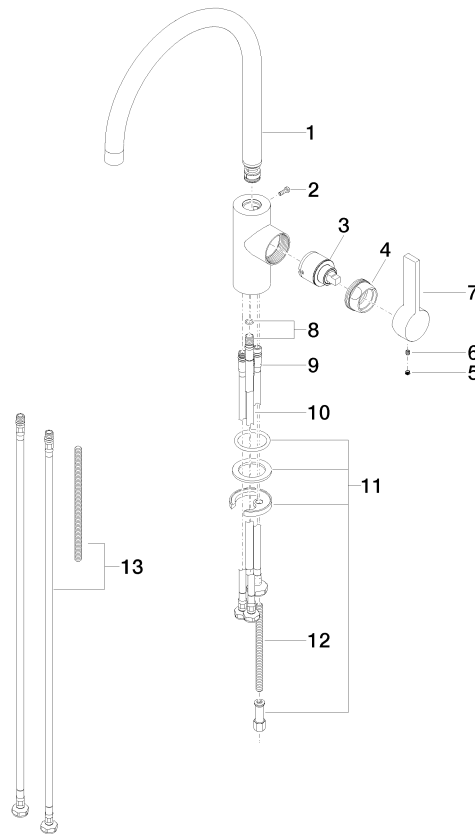
### Certificates

---

IAPMO\_N-4976 (2). IAPMO\_6397 (1).

33 826 875

Parts for other  
finishes can be found  
here: [Chrome](#)



## Spare parts list

No.	Item Number	Name	Quantity used	Delivery time
1	90 28 22 202 03-93	spout	1	20
2	09 30 30 080 90	screw	1	2
3	90 15 05 045 00 90	cartridge	1	2
4	09 24 04 107-93	nut	1	20
5	90 31 20 109 00 90	plug	1	2
6	90 31 11 030 00 90	pin	1	2
7	09 20 79 040-93	handle	1	60
8	04 24 02 046 01-07	pipe	1	10
9	04 30 04 019 00 90	hose	1	2
10	04 30 04 106 00 90	hose	2	2
11	04 30 11 038 75 90	fixing set	1	2
12	09 31 11 091 90	pin	1	2
13	12 803 970-90 0010	Extension set -	1	60