

ELIO Single-lever mixer Pull-out - Brushed Dark Platinum

ELIO

33 840 790



- 235mm projection
- pivotable spout 360°
- air-enriched flow
- height of mixer 337 mm
- height up to aerator 300 mm
- hole diameter 35 mm
- 2 x pressure hose with 3/8" cap nut
- fabric braided hose 1500 mm
- max. flow 5.7 l/min at 3 bar flow pressure
- lead-free
- This product can help a building meet the requirements of Green Building Rating Systems, e.g. LEED®, BREEAM®, DGNB

Not possible in combination with rinsing spray.

	Brushed Dark Platinum	33 840 790-99 0010
	Chrome	33 840 790-00 0010
	Brushed Platinum	33 840 790-06 0010
	Platinum	33 840 790-08 0010
	Dark Chrome	33 840 790-19 0010
	Brushed Durabronze (23kt Gold)	33 840 790-28 0010
	Brushed Champagne (22kt Gold)	33 840 790-46 0010
	Champagne (22kt Gold)	33 840 790-47 0010
	Brushed Chrome	33 840 790-93 0010

Recommended miscellaneous

**AIR SWITCH Control button -
Brushed Dark Platinum**

10 713 970-99



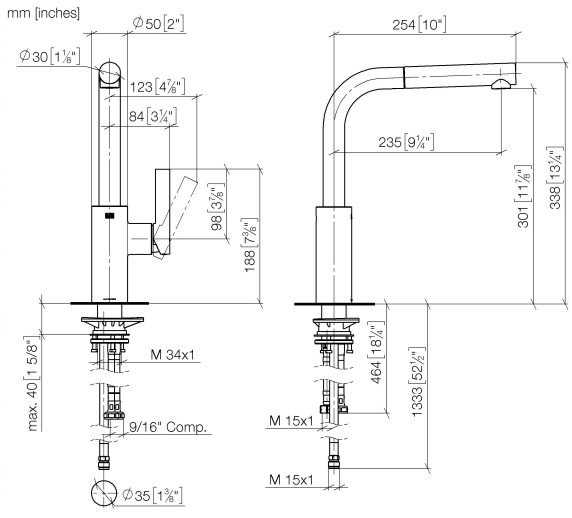
Recommended miscellaneous

**Dispenser without rosette -
Brushed Dark Platinum**

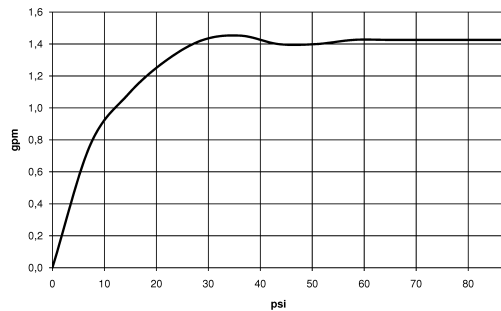
82 424 970-99



33 840 790



Flow rate chart



Codes & Standards

ADA

ASME
A112.18.1/CSA
B125.1

California Energy
Commission
(CEC)

NSF/ANSI 372

NSF/ANSI/CAN
61

NSF372



ELIO Single-lever mixer Pull-out - Brushed Dark Platinum

ELIO

33 840 790

Certificates

IAPMO_6397

33 840 790

Product version up to 12/31/2013

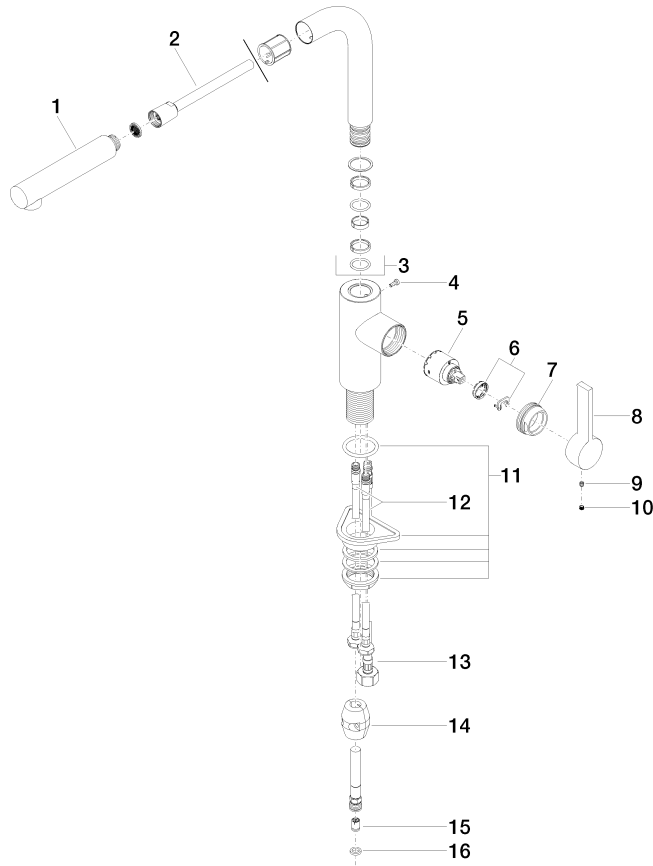
Product version from 12/31/2013 to 5/15/2020

Product version from 5/15/2020 to 5/5/2021

Product version from 5/5/2021 to 6/1/2022

Product version from 6/1/2022

Parts for other
finishes can be found
here: [Chrome](#)





ELIO Single-lever mixer Pull-out - Brushed Dark Platinum

ELIO

33 840 790

Spare parts list

Product version up to 12/31/2013

Product version from 12/31/2013 to 5/15/2020

Product version from 5/15/2020 to 5/5/2021

Product version from 5/5/2021 to 6/1/2022

Product version from 6/1/2022

No.	Item Number	Name	Quantity used	Delivery time
	04 12 11 106 00-99	shower	17	30