

## SYNC Single-lever mixer Pull-down with spray function - Brushed Chrome

SYNC

33 875 895



- 240mm projection
- pivotable spout 360°
- Optional swivel limiter available with swivel limiter set 12 821 970 90
- laminar and spray flow
- height of mixer 420 mm
- height up to laminar flow regulator 240 mm
- hole diameter 35 mm
- 2 x pressure hose with 3/8" cap nut
- 1800 mm metal shower hose
- sprayface with anti-scaling system
- max. flow 5.7 l/min at 3 bar flow pressure
- lead-free
- This product can help a building meet the requirements of Green Building Rating Systems, e.g. LEED®, BREEAM®, DGNB

Intrinsic protection against back flow.

Push button locks into spray mode when pressed. To switch back to laminar flow the water must be turned off.

	Brushed Chrome	33 875 895-93 0010
	Chrome	33 875 895-00 0010
	Brushed Platinum	33 875 895-06 0010
	Platinum	33 875 895-08 0010
	Durabrass (23kt Gold)	33 875 895-09 0010
	Dark Chrome	33 875 895-19 0010
	Brushed Durabrass (23kt Gold)	33 875 895-28 0010
	Matte Black	33 875 895-33 0010
	Brushed Champagne (22kt Gold)	33 875 895-46 0010
	Champagne (22kt Gold)	33 875 895-47 0010
	Brushed Dark Platinum	33 875 895-99 0010

### Recommended miscellaneous

**Swivel limitation set -**

12 821 970 90



### Recommended miscellaneous

**AIR SWITCH Control button -  
Brushed Chrome**

10 713 970-93



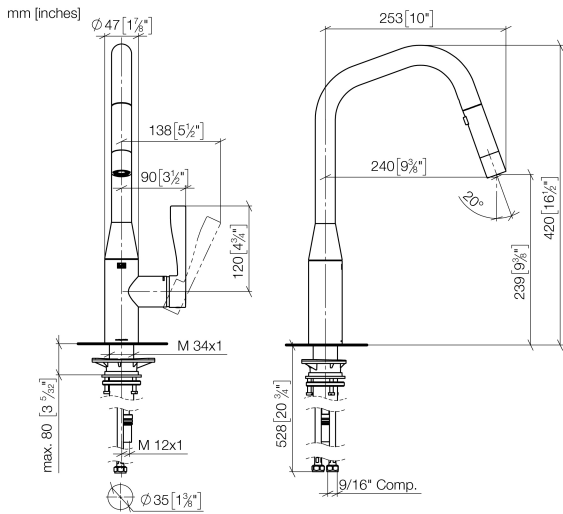
### Recommended miscellaneous

**Dispenser without rosette -  
Brushed Chrome**

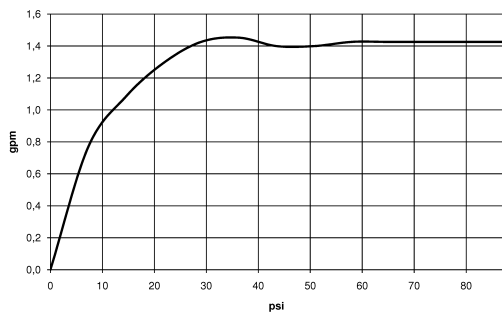
82 424 970-93



33 875 895



Flow rate chart



Codes & Standards

ADA	ASME A112.18.1/CSA B125.1	California Energy Commission (CEC)	NSF/ANSI 372
NSF/ANSI/CAN 61	NSF372	NSF61	



## SYNC Single-lever mixer Pull-down with spray function - Brushed Chrome

---

SYNC

33 875 895

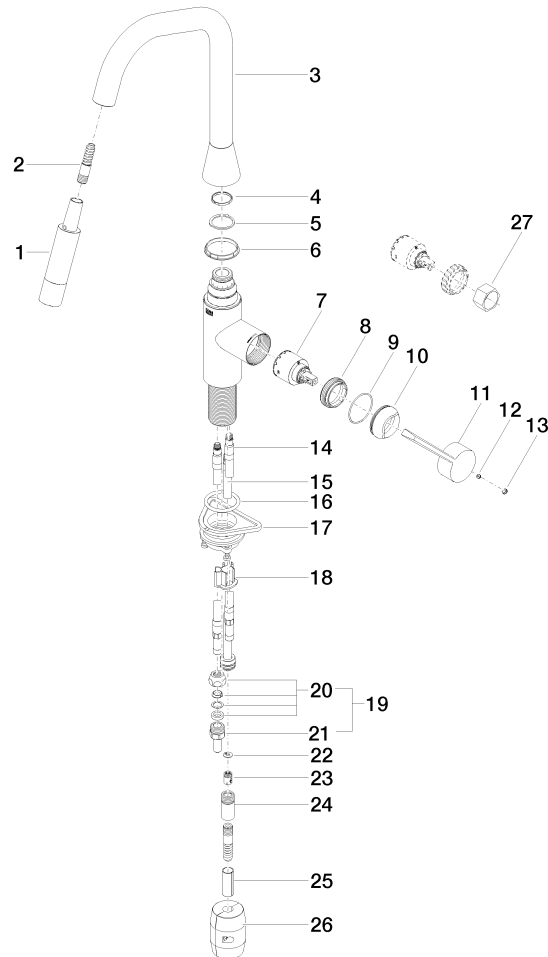
### Certificates

---

IAPMO\_6397

IAPMO\_N-4976

**Product version from 7/1/2021**





## SYNC Single-lever mixer Pull-down with spray function - Brushed Chrome

---

SYNC

33 875 895

### **Spare parts list**

**Product version from 7/1/2021**