






DORNBRACHT PIUR Single-lever mixer Pull-out with spray function - Brushed Nickel

33 960 210



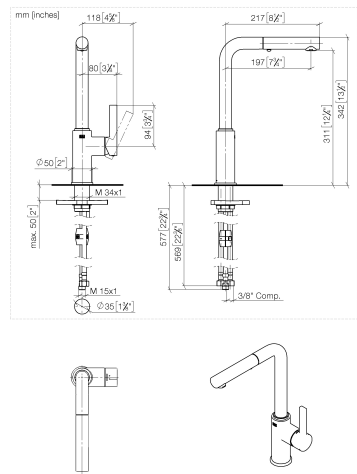
- 197mm projection
 - pivotable spout 360°
 - air-enriched flow and spray flow
 - max. flow 5.2 l/min at 3 bar flow pressure
 - lead-free
 - fabric braided hose 1500 mm
- Intrinsic protection against back flow.

| | | |
|---|----------------|--------------------|
|  | Brushed Nickel | 33 960 210-70 0010 |
|  | Chrome | 33 960 210-00 0010 |
|  | Soft Black | 33 960 210-69 0010 |

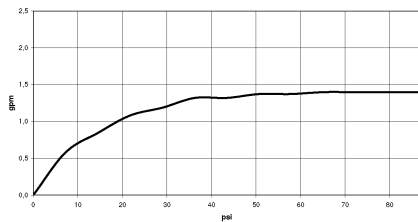


DORNBRACHT PIUR Single-lever mixer Pull-out with spray function - Brushed Nickel

33 960 210



Flow rate chart



Codes & Standards

California Energy
Commission
(CEC)



DORNBRAUCH PIUR Single-lever mixer Pull-out with spray function - Brushed Nickel

33 960 210

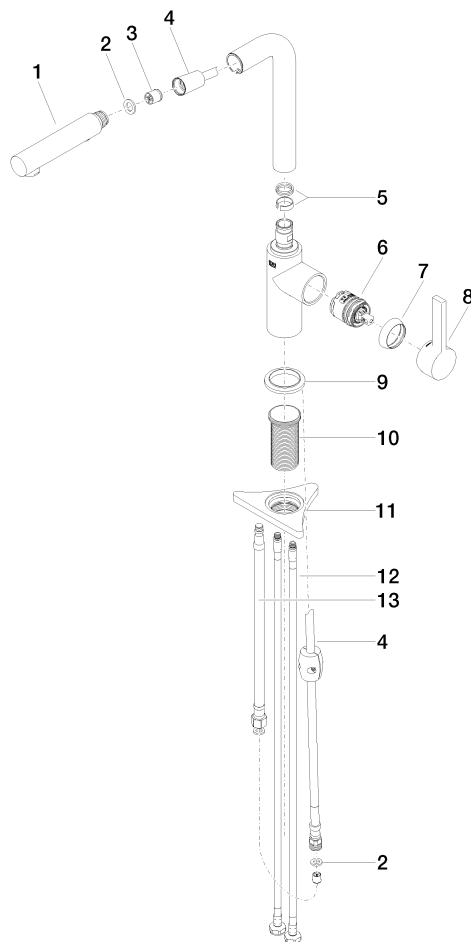
Certificates

IAPMO_N-4976 (2). IAPMO_6397 (2).

DORNBRAUCHT PIUR Single-lever mixer Pull-out with spray function - Brushed Nickel

33 960 210

Parts for other
finishes can be found
here: [Chrome](#)



Spare parts list

| No. | Item Number | Name | Quantity used | Delivery time |
|-----|--------------------|--------------|---------------|---------------|
| 1 | 90 12 11 181 01-70 | shower | 1 | 2 |
| 2 | 90 14 05 081 00 90 | seal | 1 | 2 |
| 3 | 90 23 01 051 01 90 | flow reducer | 1 | 2 |
| 4 | 90 30 02 101 00 90 | hose | 1 | 2 |
| 5 | 90 14 15 060 00 90 | gasket kit | 1 | 2 |
| 6 | 90 15 05 060 00 90 | cartridge | 1 | 2 |
| 7 | 90 28 30 011 00-70 | cover | 1 | 2 |
| 8 | 90 20 21 001 00-70 | handle | 1 | 2 |
| 9 | 90 27 21 001 00-70 | rosette | 1 | 2 |
| 10 | 90 30 01 200 00 90 | shaft | 1 | 2 |
| 11 | 90 23 10 003 00 90 | fixing set | 1 | 2 |
| 12 | 04 30 04 103 00 90 | hose | 2 | 2 |
| 13 | 90 30 04 110 00 90 | hose | 1 | 2 |