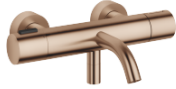


META Bath thermostat for wall mounting without shower set - Brushed Bronze

META

34 201 979



- 210mm projection
- circular normal flow
- rotary diverter with volume control and shut-off function
- 3/8" shower outlet
- slide-on rosettes Ø 60 mm
- 1/2" connection
- gauge 150 mm - 15 mm
- max. flow 16.9 l/min at 3 bar flow pressure
- WRAS 2201054

Intrinsic protection against back flow.

Intrinsic protection against back flow.

| | | |
|--|-------------------------------|---------------|
|  | Brushed Bronze | 34 201 979-42 |
|  | Chrome | 34 201 979-00 |
|  | Brushed Platinum | 34 201 979-06 |
|  | Dark Chrome | 34 201 979-19 |
|  | Light Gold | 34 201 979-26 |
|  | Brushed Light Gold | 34 201 979-27 |
|  | Matte Black | 34 201 979-33 |
|  | Brushed Champagne (22kt Gold) | 34 201 979-46 |
|  | Champagne (22kt Gold) | 34 201 979-47 |
|  | Brushed Chrome | 34 201 979-93 |
|  | Brushed Dark Platinum | 34 201 979-99 |

Required miscellaneous



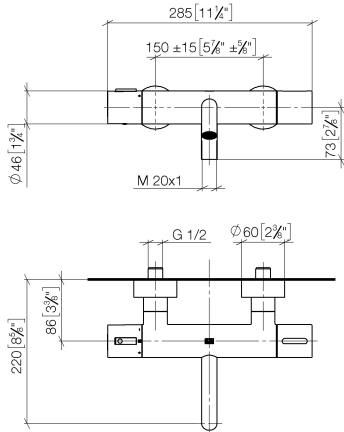
Concealed adapter -

- please order two adapters (USA only)

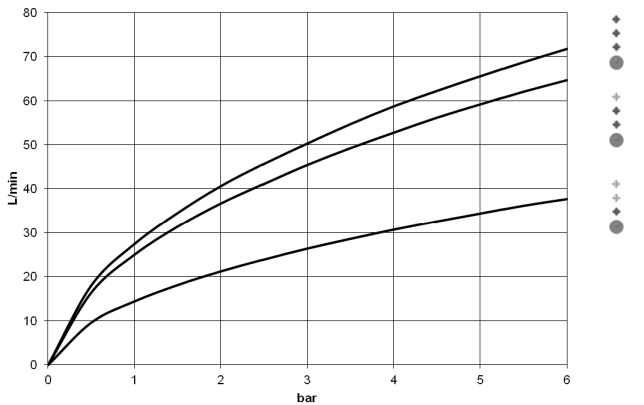
35 080 970-90
0010

34 201 979

mm [inches]



Flow rate chart



Codes & Standards

California Energy
Commission
(CEC)

DIN 4109

ISO 3822

Ü-Zeichen



META Bath thermostat for wall mounting without shower set - Brushed Bronze

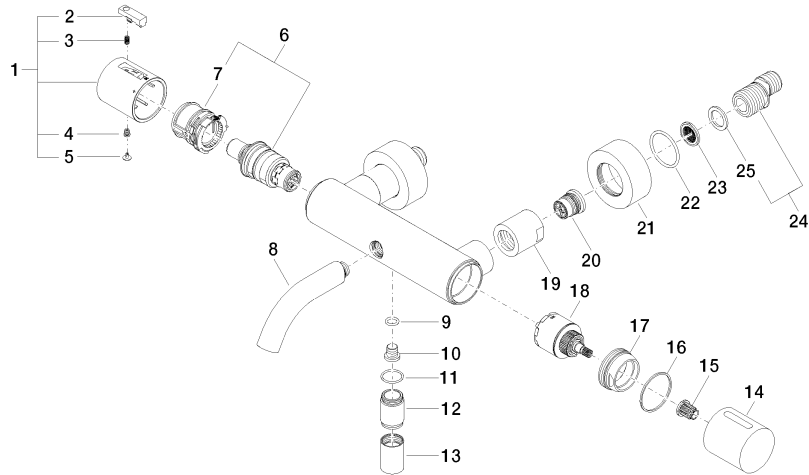
META

34 201 979

Certificates

LGA_18

Product version from 9/1/2022





Spare parts list

Product version from 9/1/2022