

## Showerpipe with shower thermostat without hand shower 220 mm - Brushed Platinum

TARA

34 459 892



Fits: TARA, VAIA, META

- shower with fixed riser projection 452mm
  - overhead shower: rain flow
  - rain shower Ø 220 mm
  - rain shower with anti-scale system
  - max. rainshower flow 6.8 l/min
  - rotary diverter with volume control and shut-off function
  - slide-on rosettes Ø 70 mm
  - height of fittings up to rain shower (bottom edge) 963mm
  - height of fittings up to top edge of elbow 1267mm
  - gauge 150 mm - 13 mm
  - metal shower hose 1750mm with integrated anti-twist protection
  - 1/2" connection
  - slide bar
  - Pipe diameter 23.5 mm
  - quick clearing
  - This product reduces water consumption by % (compared to requirements of EPAct '92)
  - This product can contribute to Water Use Reduction in LEED® Green Building Rating
- Intrinsic protection against back flow.**

**NOTE: Hand shower sold separately. Please see hand shower options under the miscellaneous articles section of each series.**

Intrinsic protection against back flow.

NOTE: Hand shower sold separately. Please see hand shower options under the miscellaneous articles section of each series.

|  |                                |                    |
|--|--------------------------------|--------------------|
|  | Brushed Platinum               | 34 459 892-06 0010 |
|  | Chrome                         | 34 459 892-00 0010 |
|  | Platinum                       | 34 459 892-08 0010 |
|  | Dark Chrome                    | 34 459 892-19 0010 |
|  | Brushed Durabronze (23kt Gold) | 34 459 892-28 0010 |
|  | Matte Black                    | 34 459 892-33 0010 |
|  | Brushed Champagne (22kt Gold)  | 34 459 892-46 0010 |
|  | Champagne (22kt Gold)          | 34 459 892-47 0010 |
|  | Brushed Chrome                 | 34 459 892-93 0010 |
|  | Brushed Dark Platinum          | 34 459 892-99 0010 |

### Required miscellaneous



**Concealed adapter -** 35 080 970-90  
 •please order two adapters (USA only) 0010

### Required miscellaneous



**Hand shower FlowReduce -** 28 016 979-06  
**Brushed Platinum** 0010

### Required miscellaneous



**Hand shower FlowReduce -** 28 012 979-06  
**Brushed Platinum** 0010

### Required miscellaneous

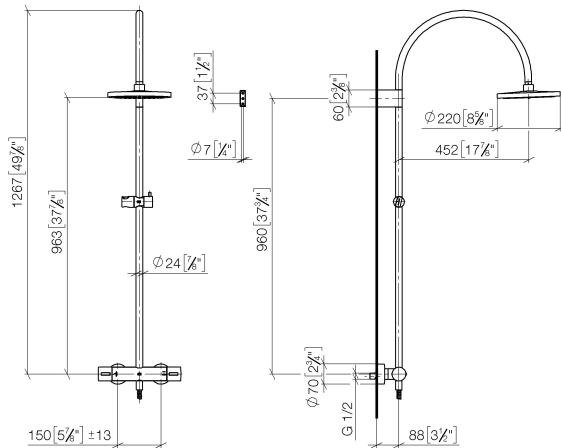


**Hand shower FlowReduce -** 28 018 979-06  
**Brushed Platinum** 0010

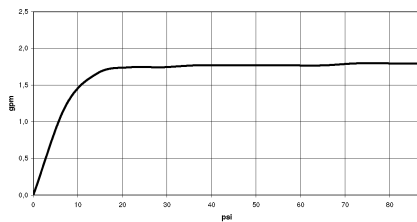
## Showerpipe with shower thermostat without hand shower 220 mm - Brushed Platinum

TARA

34 459 892  
mm [inches]  
M 1:10



### Flow rate chart

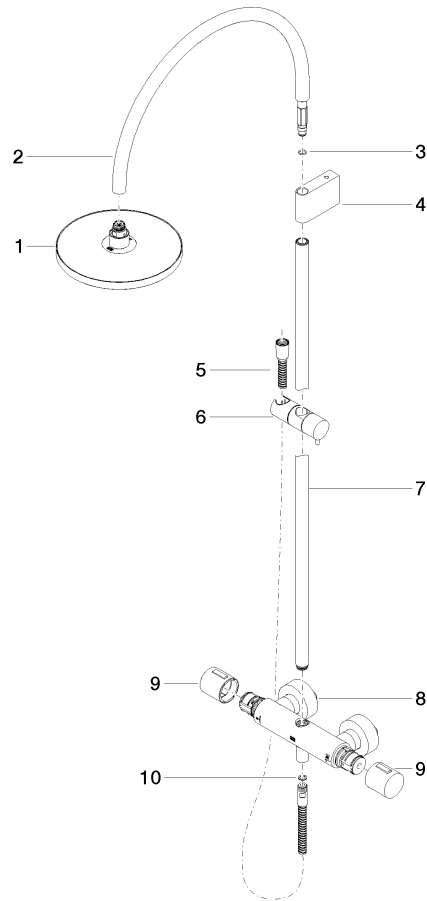


### Codes & Standards

ASME  
A112.18.1/CSA  
B125.1

California Energy  
Commission  
(CEC)

34 459 892



## Spare parts list

| No. | Item Number        | Name                                                          | Quantity used | Delivery time |
|-----|--------------------|---------------------------------------------------------------|---------------|---------------|
| 1   | 04 12 05 092 10-06 | shower                                                        | 1             | 10            |
| 2   | 04 28 22 346 00-06 | pipe                                                          | 1             | 10            |
| 3   | 09 14 10 008 90    | seal                                                          | 1             | 2             |
| 4   | 90 17 11 150 00-06 | holder                                                        | 1             | 10            |
| 5   | 28 322 970-06      | Metal shower hose 1/2" x 3/8" x 1750 mm - Brushed<br>Platinum | 1             | 2             |
| 6   | 12 570 970-06      | Slide unit - Brushed Platinum                                 | 1             | 10            |
| 7   | 90 28 22 349 00-06 | pipe                                                          | 1             | 10            |
| 8   | 04 17 01 250 00-06 | connection                                                    | 1             | 10            |
| 9   | 90 17 33 015 00-06 | handle                                                        | 2             | 10            |
| 10  | 90 14 20 026 00 90 | seal                                                          | 1             | 2             |