

Showerpipe with shower thermostat without hand shower - Platinum

IMO

34 459 980



Fits: IMO, MEM, CL.1, CYO

- shower with fixed riser projection 453mm
 - overhead shower: rain flow
 - rain shower 300 x 240mm
 - rain shower with anti-scale system
 - max. rainshower flow 6.8 l/min
 - Function from: 6 l/min
 - rotary diverter with volume control and shut-off function
 - slide-on rosettes Ø 70 mm
 - height of fittings up to rain shower (bottom edge) 1009mm
 - height of fittings up to top edge of elbow 1150mm
 - gauge 150 mm - 13 mm
 - metal shower hose 1750mm with integrated anti-twist protection
 - 1/2" connection
 - slide bar
 - Pipe diameter 23.5 mm
 - quick clearing
 - This product reduces water consumption by % (compared to requirements of EPA '92)
 - This product can contribute to Water Use Reduction in LEED® Green Building Rating
- Intrinsic protection against back flow.**

NOTE: Hand shower sold separately. Please see hand shower options under the miscellaneous articles section of each series.

Intrinsic protection against back flow.

NOTE: Hand shower sold separately. Please see hand shower options under the miscellaneous articles section of each series.

	Platinum	34 459 980-08 0010
	Chrome	34 459 980-00 0010
	Brushed Platinum	34 459 980-06 0010
	Dark Chrome	34 459 980-19 0010
	Brushed Light Gold	34 459 980-27 0010
	Brushed Durabronze (23kt Gold)	34 459 980-28 0010
	Matte Black	34 459 980-33 0010
	Brushed Champagne (22kt Gold)	34 459 980-46 0010
	Champagne (22kt Gold)	34 459 980-47 0010
	Brushed Chrome	34 459 980-93 0010
	Brushed Dark Platinum	34 459 980-99 0010

Required miscellaneous



Concealed adapter - 35 080 970-90
 • please order two adapters (USA only) 0010

Required miscellaneous



Hand shower FlowReduce - 28 012 979-08
Platinum 0010

Required miscellaneous



Hand shower FlowReduce - 28 016 979-08
Platinum 0010

Required miscellaneous



Hand shower FlowReduce - 28 018 979-08
Platinum 0010

Required miscellaneous



SERIES-VARIOUS Hand shower - 28 029 979-08
Platinum 0010

Required miscellaneous



SERIES-VARIOUS Hand shower - 28 027 979-08
Platinum 0010

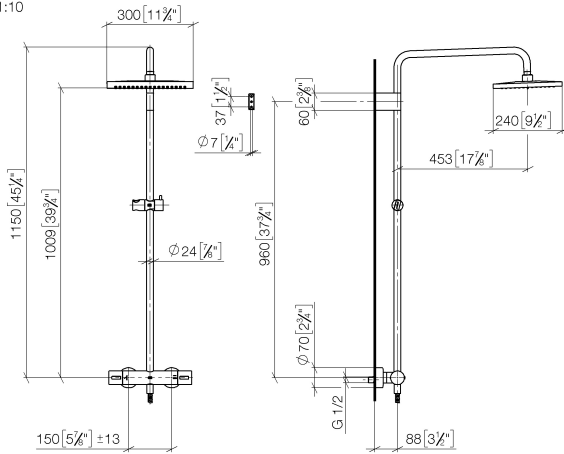
Required miscellaneous



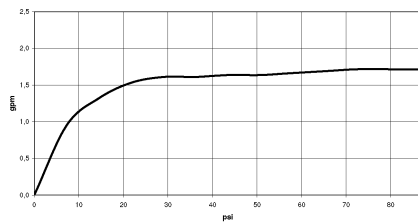
SERIES-VARIOUS Hand shower - 28 025 979-08
Platinum 0010

34 459 980

mm [inches]
1:10



Flow rate chart

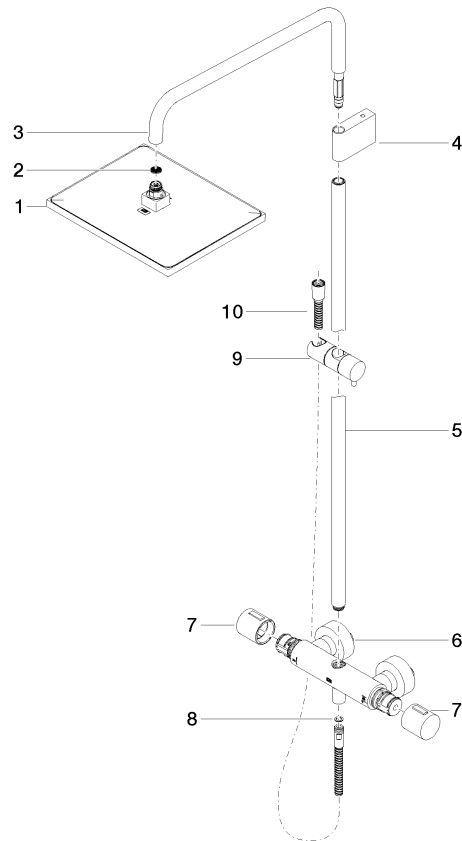


Codes & Standards

ASME
A112.18.1/CSA
B125.1

California Energy
Commission
(CEC)

Product version from 6/1/2024





Showerpipe with shower thermostat without hand shower - Platinum

IMO

34 459 980

Spare parts list

Product version from 6/1/2024

No.	Item Number	Name	Quantity used	Delivery time
	04 12 05 063 10-08	shower	10	40